
phospho-SCNN1B (Thr615) Rabbit pAb

Catalog Number: bs-5701R

Target Protein: phospho-SCNN1B (Thr615)

Concentration: 1mg/ml

Form: Liquid

Host: Rabbit

Clonality: Polyclonal

Isotype: IgG

Applications: WB (1:500-2000), Flow-Cyt (1ug/Test), ICC/IF (1:100)

Reactivity: Human (predicted:Mouse, Rat, Rabbit, Cow, Dog, GuineaPig, Horse)

Predicted MW: 73 kDa

Detected MW: 95-100/65-75 kDa

Subcellular Cell membrane

Locations:

Entrez Gene: 6338

Swiss Prot: P51168

Source: KLH conjugated Synthesised phosphopeptide derived from human SCNN1B around the phosphorylation site of Thr615: PG(p-T)PP.

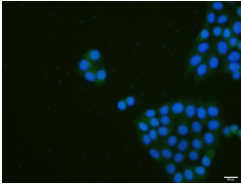
Purification: affinity purified by Protein A

Storage: 0.01M TBS (pH7.4) with 1% BSA, 0.02% Proclin300 and 50% Glycerol.

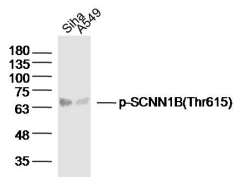
Shipped at 4°C. Store at -20°C for one year. Avoid repeated freeze/thaw cycles.

Background: SCNN1B is a subunit of the epithelial sodium channel, ENaC. ENaC has high sodium selectivity, low conductance, and amiloride sensitivity. The functional channel of ENaC is composed of at least 3 subunits, alpha (SCNN1A), beta (SCNN1B), and gamma (SCNN1G). The 3 subunits show sequence similarities to one another, indicating descent from a common ancestral gene. Each encodes a protein containing 2 transmembrane domains, with intracellular amino and carboxyl termini.

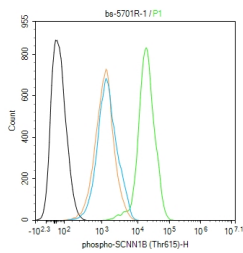
VALIDATION IMAGES



MCF7 cell; 4% Paraformaldehyde-fixed; Triton X-100 at room temperature for 20 min; Blocking buffer (normal goat serum, C-0005) at 37°C for 20 min; Antibody incubation with (phospho-SCNN1B (Thr615)) polyclonal Antibody, Unconjugated (bs-5701R) 1:100, 90 minutes at 37°C; followed by a conjugated Goat Anti-Rabbit IgG antibody at 37°C for 90 minutes, DAPI (blue, C02-04002) was used to stain the cell nuclei.



Sample: SiHa (Human) Cell Lysate at 40 ug A549 (Human) Cell Lysate at 40 ug Primary: Anti-p-SCNN1B(Thr615)(bs-5701R) at 1/300 dilution Secondary: IRDye800CW Goat Anti-Rabbit IgG at 1/20000 dilution Predicted band size: 73kD Observed band size: 73kD



Blank control (black line) :Hela. Primary Antibody (green line): Rabbit Anti-phospho-SCNN1B (Thr615) antibody (bs-5701R) Dilution:1ug/Test; Secondary Antibody (white blue line) : Goat anti-rabbit IgG-AF488 Dilution: 0.5ug/Test. Isotype control (orange line) : Normal Rabbit IgG Protocol The cells were fixed with 4% PFA (10min at room temperature) and then permeabilized with 90% ice-cold methanol for 20 min at -20°C, The cells were then incubated in 5%BSA to block non-specific protein-protein interactions for 30 min at room temperature. Cells stained with Primary Antibody for 30 min at room temperature. The secondary antibody used for 40 min at room temperature. Acquisition of 20,000 events was performed.