

**bs-22025R****[ Primary Antibody ]**

## Glypican 6 Rabbit pAb

**Bioss**  
ANTIBODIES

www.bioss.com.cn

sales@bioss.com.cn

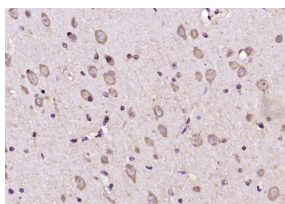
techsupport@bioss.com.cn

400-901-9800

### — DATASHEET —

<b>Host:</b> Rabbit	<b>Isotype:</b> IgG	<b>Applications:</b> IHC-P (1:100-500)
<b>Clonality:</b> Polyclonal		<b>IHC-F</b> (1:100-500)
<b>GeneID:</b> 10082	<b>SWISS:</b> Q9Y625	<b>IF</b> (1:100-500)
<b>Target:</b> Glypican 6		<b>Reactivity:</b> Rat (predicted: Human, Mouse, Rabbit, Pig, Sheep, Dog)
<b>Immunogen:</b> KLH conjugated synthetic peptide derived from human Glypican 6 : 131-230/555.		<b>Predicted MW.:</b> 56 kDa
<b>Purification:</b> affinity purified by Protein A		<b>Subcellular Location:</b> Secreted ,Extracellular matrix ,Cell membrane
<b>Concentration:</b> 1mg/ml		
<b>Storage:</b> 0.01M TBS (pH7.4) with 1% BSA, 0.02% Proclin300 and 50% Glycerol. Shipped at 4°C. Store at -20°C for one year. Avoid repeated freeze/thaw cycles.		
<b>Background:</b> Glypican 6 is a putative cell surface coreceptor for growth factors, extracellular matrix proteins, proteases and anti proteases. The glypicans comprise a family of glycosylphosphatidylinositol anchored heparan sulfate proteoglycans. The glypicans have been implicated in the control of cell growth and division.		

### — VALIDATION IMAGES —



Paraformaldehyde-fixed, paraffin embedded (rat brain); Antigen retrieval by boiling in sodium citrate buffer (pH6.0) for 15min; Block endogenous peroxidase by 3% hydrogen peroxide for 20 minutes; Blocking buffer (normal goat serum) at 37°C for 30min; Antibody incubation with (Glypican 6) Polyclonal Antibody, Unconjugated (bs-22025R) at 1:200 overnight at 4°C, followed by operating according to SP Kit(Rabbit) (sp-0023) instructions and DAB staining.