

**bs-4248R****[ Primary Antibody ]****ORP150 Rabbit pAb****BioSS**  
**ANTIBODIES**

www.bioss.com.cn

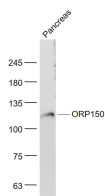
sales@bioss.com.cn

techsupport@bioss.com.cn

400-901-9800

**— DATASHEET —**

<b>Host:</b> Rabbit	<b>Isotype:</b> IgG	<b>Applications:</b> WB (1:500-2000)
<b>Clonality:</b> Polyclonal		
<b>GeneID:</b> 10525	<b>SWISS:</b> Q9Y4L1	
<b>Target:</b> ORP150		
<b>Immunogen:</b> KLH conjugated synthetic peptide derived from human ORP150: 401-500/999.		
<b>Purification:</b> affinity purified by Protein A		
<b>Concentration:</b> 1mg/ml		
<b>Storage:</b> 0.01M TBS (pH7.4) with 1% BSA, 0.02% Proclin300 and 50% Glycerol. Shipped at 4°C. Store at -20°C for one year. Avoid repeated freeze/thaw cycles.		<b>Reactivity:</b> Human, Mouse (predicted: Rat, Pig, Cow, Chicken, Dog, Horse)
<b>Background:</b> ORP150 (150KDa Oxygen-regulated Protein) is a member of the heat shock protein/stress protein family and has a pivotal role in cytoprotective cellular mechanisms triggered by oxygen deprivation. This protein has also been described as a molecular chaperone, induced by various environmental and physiological stimuli, and participates in protein folding in the endoplasmic reticulum. Furthermore, ORP150 is up-regulated in tumors and, in breast tumors, may be associated with tumor invasiveness.		<b>Predicted MW.:</b> 108 kDa
		<b>Subcellular Location:</b> Cytoplasm

**— VALIDATION IMAGES —**

Sample: Pancreas (Mouse) Lysate at 40 ug  
Primary: Anti- ORP150 (bs-4248R) at 1/1000  
dilution Secondary: IRDye800CW Goat Anti-  
Rabbit IgG at 1/20000 dilution Predicted band  
size: 108 kD Observed band size: 108 kD

**— SELECTED CITATIONS —**

- **[IF=2.12]** Ruan Lin, et al. "Tetrandrine Attenuated Cerebral Ischemia/Reperfusion Injury and Induced Differential Proteomic Changes in a MCAO Mice Model Using 2-D DIGE." Neurochemical Research (2013). 1-9. WB ;="Rat". 23780673