

**bs-22698R****[ Primary Antibody ]****BHMT Rabbit pAb****BioSS**  
**ANTIBODIES**

www.bioss.com.cn

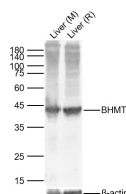
sales@bioss.com.cn

techsupport@bioss.com.cn

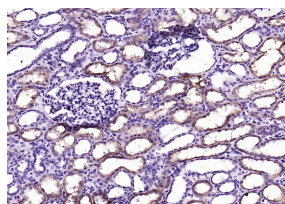
400-901-9800

**— DATASHEET —**

<b>Host:</b> Rabbit	<b>Isotype:</b> IgG	<b>Applications:</b> <b>WB</b> (1:500-2000) <b>IHC-P</b> (1:100-500) <b>IHC-F</b> (1:100-500) <b>IF</b> (1:100-500)  <b>Reactivity:</b> Human, Mouse, Rat (predicted: Pig, Sheep, Cow, Dog)  <b>Predicted MW.:</b> 45 kDa  <b>Subcellular Location:</b> Cytoplasm
<b>Clonality:</b> Polyclonal		
<b>GeneID:</b> 635	<b>SWISS:</b> Q93088	
<b>Target:</b> BHMT		
<b>Immunogen:</b> KLH conjugated synthetic peptide derived from human BHMT: 310-406/406.		
<b>Purification:</b> affinity purified by Protein A		
<b>Concentration:</b> 1mg/ml		
<b>Storage:</b> 0.01M TBS (pH7.4) with 1% BSA, 0.02% Proclin300 and 50% Glycerol. Shipped at 4°C. Store at -20°C for one year. Avoid repeated freeze/thaw cycles.		
<b>Background:</b> This gene encodes a cytosolic enzyme that catalyzes the conversion of betaine and homocysteine to dimethylglycine and methionine, respectively. Defects in this gene could lead to hyperhomocyst(e)inemia, but such a defect has not yet been observed. [provided by RefSeq, Jul 2008]		

**— VALIDATION IMAGES —**

Sample: Lane 1: Mouse Liver Lysates Lane 2: Rat Liver Lysates Primary: Anti-BHMT (bs-22698R) at 1/1000 dilution Secondary: IRDye800CW Goat Anti-Rabbit IgG at 1/20000 dilution Predicted band size: 45kDa Observed band size: 45kDa



Paraformaldehyde-fixed, paraffin embedded (Human kidney carcinoma); Antigen retrieval by boiling in sodium citrate buffer (pH6.0) for 15min; Block endogenous peroxidase by 3% hydrogen peroxide for 20 minutes; Blocking buffer (normal goat serum) at 37°C for 30min; Antibody incubation with (BHMT) Polyclonal Antibody, Unconjugated (bs-22698R) at 1:200 overnight at 4°C, followed by operating according to SP Kit(Rabbit) (sp-0023) instructions and DAB staining.