

bs-22620R**[Primary Antibody]****Inhibin beta A Rabbit pAb****BioSS**
ANTIBODIES

www.bioss.com.cn

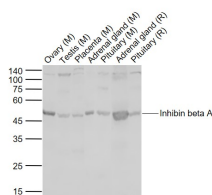
sales@bioss.com.cn

techsupport@bioss.com.cn

400-901-9800

— DATASHEET —

Host: Rabbit	Isotype: IgG	Applications: WB (1:500-2000)
Clonality: Polyclonal		Reactivity: Mouse, Rat (predicted: Human)
GeneID: 3624	SWISS: P08476	
Target: Inhibin beta A		Predicted MW.: 45 kDa
Immunogen: KLH conjugated synthetic peptide derived from human Inhibin beta A : 351-426/426.		Subcellular Location: Secreted
Purification: affinity purified by Protein A		
Concentration: 1mg/ml		
Storage: 0.01M TBS (pH7.4) with 1% BSA, 0.02% Proclin300 and 50% Glycerol. Shipped at 4°C. Store at -20°C for one year. Avoid repeated freeze/thaw cycles.		
Background: The inhibin beta A subunit joins the alpha subunit to form a pituitary FSH secretion inhibitor. Inhibin has been shown to regulate gonadal stromal cell proliferation negatively and to have tumor suppressor activity. In addition, serum levels of inhibin have been shown to reflect the size of granulosa cell tumors and can therefore be used as a marker for primary as well as recurrent disease. Because expression in gonadal and various extragonadal tissues may vary severalfold in a tissue specific fashion, it is proposed that inhibin may be both a growth/differentiation factor and a hormone. Furthermore, the beta A subunit forms a homodimer, activin A, and also joins with a beta B subunit to form a heterodimer, activin AB, both of which stimulate FSH secretion. Finally, it has been shown that the beta A subunit mRNA is identical to the erythroid differentiation factor subunit mRNA and that only one gene for this mRNA exists in the human genome		

— VALIDATION IMAGES —

Sample: Lane 1: Ovary (Mouse) Lysate at 40 ug
 Lane 2: Testis (Mouse) Lysate at 40 ug Lane 3:
 Placenta (Mouse) Lysate at 40 ug Lane 4: Adrenal
 gland (Mouse) Lysate at 40 ug Lane 5: Pituitary
 (Mouse) Lysate at 40 ug Lane 6: Adrenal gland
 (Rat) Lysate at 40 ug Lane 7: Pituitary (Rat)
 Lysate at 40 ug Primary: Anti-Inhibin beta A
 (bs-22620R) at 1/1000 dilution Secondary:
 IRDye800CW Goat Anti-Rabbit IgG at 1/20000
 dilution Predicted band size: 45 kD Observed
 band size: 48 kD