

bs-22619R**[Primary Antibody]****Inhibin beta A Rabbit pAb****BioSS**
ANTIBODIES

www.bioss.com.cn

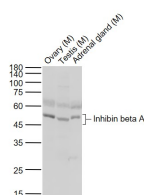
sales@bioss.com.cn

techsupport@bioss.com.cn

400-901-9800

— DATASHEET —

Host: Rabbit Clonality: Polyclonal GeneID: 3624 Target: Inhibin beta A Immunogen: KLH conjugated synthetic peptide derived from human Inhibin beta A : 331-426/426. Purification: affinity purified by Protein A Concentration: 1mg/ml Storage: 0.01M TBS (pH7.4) with 1% BSA, 0.02% Proclin300 and 50% Glycerol. Shipped at 4°C. Store at -20°C for one year. Avoid repeated freeze/thaw cycles. Background: The inhibin beta A subunit joins the alpha subunit to form a pituitary FSH secretion inhibitor. Inhibin has been shown to regulate gonadal stromal cell proliferation negatively and to have tumor suppressor activity. In addition, serum levels of inhibin have been shown to reflect the size of granulosa cell tumors and can therefore be used as a marker for primary as well as recurrent disease. Because expression in gonadal and various extragonadal tissues may vary severalfold in a tissue specific fashion, it is proposed that inhibin may be both a growth/differentiation factor and a hormone. Furthermore, the beta A subunit forms a homodimer, activin A, and also joins with a beta B subunit to form a heterodimer, activin AB, both of which stimulate FSH secretion. Finally, it has been shown that the beta A subunit mRNA is identical to the erythroid differentiation factor subunit mRNA and that only one gene for this mRNA exists in the human genome	Isotype: IgG SWISS: P08476 Applications: WB (1:500-2000) Reactivity: Mouse (predicted: Human, Rat, Rabbit, Pig, Sheep, Cow, Chicken) Predicted MW.: 45 kDa Subcellular Location: Secreted
---	--

— VALIDATION IMAGES —

Sample: Lane 1: Ovary (Mouse) TissueLysate at 40 ug
Lane 2: Testis (Mouse) TissueLysate at 40 ug
Lane 3: Adrenal gland (Mouse) TissueLysate at 40 ug
Primary: Anti-Inhibin beta A (bs-22619R) at 1/1000 dilution
Secondary: IRDye800CW Goat Anti-Rabbit IgG at 1/20000 dilution
Predicted band size: 45 kD
Observed band size: 50 kD