

GRIK3 Rabbit pAb

Catalog Number: bs-12007R

Target Protein: GRIK3

Concentration: 1mg/ml

Form: Liquid

Host: Rabbit

Clonality: Polyclonal

Isotype: IgG

Applications: Flow-Cyt (2ug/test)

Reactivity: Human (predicted: Mouse, Rat, Pig, Sheep, Cow, Chicken, Dog, Horse)

Predicted MW: 100 kDa

Entrez Gene: 2899

Swiss Prot: Q13003

Source: KLH conjugated synthetic peptide derived from human GRIK3/GLR7: 501-600/919.

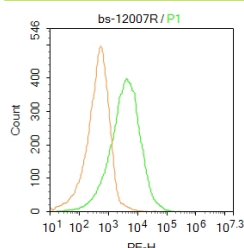
Purification: affinity purified by Protein A

Storage: 0.01M TBS (pH7.4) with 1% BSA, 0.02% Proclin300 and 50% Glycerol.

Shipped at 4°C. Store at -20°C for one year. Avoid repeated freeze/thaw cycles.

Background: Glutamate receptors are the predominant excitatory neurotransmitter receptors in the mammalian brain and are activated in a variety of normal neurophysiologic processes. This gene product belongs to the kainate family of glutamate receptors, which are composed of four subunits and function as ligand-activated ion channels. It is not certain if the subunit encoded by this gene is subject to RNA editing as the other 2 family members (GRIK1 and GRIK2). A Ser310Ala polymorphism has been associated with schizophrenia, and there are conflicting reports of its association with the pathogenesis of delirium tremens in alcoholics. [provided by RefSeq, Jul 2008]

VALIDATION IMAGES



Blank control: MCF7. Primary Antibody (green line): Rabbit Anti-GRIK3 antibody (bs-12007R) Dilution: 1µg /10⁶ cells; Isotype Control Antibody (orange line): Rabbit IgG. Secondary Antibody: Goat anti-rabbit IgG-PE Dilution: 2µg /test. Protocol The cells were incubated in 5% BSA to block non-specific protein-protein interactions for 30 min at room temperature. Cells stained with Primary Antibody for 30 min at room temperature. The secondary antibody used for 40 min at room temperature. Acquisition of 20,000 events was performed.