

bs-11997R**[Primary Antibody]****DDAH1 Rabbit pAb****BioSS**
ANTIBODIES

www.bioss.com.cn

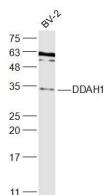
sales@bioss.com.cn

techsupport@bioss.com.cn

400-901-9800

— DATASHEET —

Host: Rabbit	Isotype: IgG	Applications: WB (1:500-2000)
Clonality: Polyclonal		Reactivity: Mouse (predicted: Human, Rat, Rabbit, Pig, Sheep, Cow, Dog)
GeneID: 23576	SWISS: O94760	Predicted MW.: 31 kDa
Target: DDAH1		Subcellular Location: Cytoplasm
Immunogen: KLH conjugated synthetic peptide derived from human DDAH1: 201-285/285.		
Purification: affinity purified by Protein A		
Concentration: 1mg/ml		
Storage: 0.01M TBS (pH7.4) with 1% BSA, 0.02% Proclin300 and 50% Glycerol. Shipped at 4°C. Store at -20°C for one year. Avoid repeated freeze/thaw cycles.		
Background: DDAH, a dimethylarginine dimethylaminohydrolase, hydrolyzes dimethyl arginine (ADMA) and monomethyl arginine (MMA), both inhibitors of nitric oxide synthases, and may be involved in in-vivo modulation of nitric oxide production (1,2). Impairment of DDAH causes ADMA accumulation and a reduction in cGMP generation (3). DDAH II, the predominant DDAH isoform in endothelial cells, facilitates the induction of nitric oxide synthesis by all-trans-Retinoic acid (atRA) (4). DDAH proteins are highly expressed in colon, kidney, stomach and liver tissues (1).		

— VALIDATION IMAGES —

Sample: BV-2(Mouse) Cell Lysate at 30 ug
Primary: Anti-DDAH1 (bs-11997R) at 1/1000
dilution Secondary: IRDye800CW Goat Anti-
Rabbit IgG at 1/20000 dilution Predicted band
size: 31 kD Observed band size: 33 kD