

**bs-11992R****[ Primary Antibody ]****PPP2R5D Rabbit pAb****BioSS**  
**ANTIBODIES**

www.bioss.com.cn

sales@bioss.com.cn

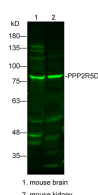
techsupport@bioss.com.cn

400-901-9800

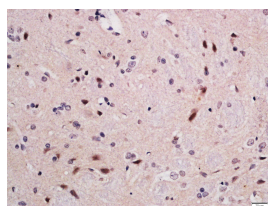
**— DATASHEET —****Host:** Rabbit**Isotype:** IgG**Clonality:** Polyclonal**GeneID:** 5528**SWISS:** Q14738**Target:** PPP2R5D**Immunogen:** KLH conjugated synthetic peptide derived from human PPP2R5D: 501-602/602.**Purification:** affinity purified by Protein A**Concentration:** 1mg/ml**Storage:** 0.01M TBS (pH7.4) with 1% BSA, 0.02% Proclin300 and 50% Glycerol.

Shipped at 4°C. Store at -20°C for one year. Avoid repeated freeze/thaw cycles.

**Background:** In eukaryotes, the phosphorylation and dephosphorylation of proteins on serine and threonine residues is an essential means of regulating a broad range of cellular functions, including division, homeostasis and apoptosis. A group of proteins that are intimately involved in this process are the protein phosphatases. In general, the protein phosphatase (PP) holoenzyme is a trimeric complex composed of a regulatory subunit, a variable subunit, and a catalytic subunit. Four major families of protein phosphatase catalytic subunits have been identified, designated PP1, PP2A, PP2B (calcineurin) and PP2C. An additional protein phosphatase catalytic subunit, PPX (also known as PP4) is a putative member of a novel PP family. The PP2A family comprises subfamily members PP2A Alpha and PP2A Beta. The PP2A catalytic subunit associates with a variety of regulatory subunits. Regulatory subunits include PP2A-A-Alpha and -A-Beta, PP2A-B-Alpha and -B-Beta, PP2A-C-Alpha and -C-Beta, PP2A-B56-Alpha, -B56-Beta, -B56-gamma and -B56-Delta.

**Applications:** WB (1:500-2000)**IHC-P** (1:100-500)**IHC-F** (1:100-500)**IF** (1:100-500)**Reactivity:** Mouse, Rat  
(predicted: Human, Cow)**Predicted  
MW.:** 70 kDa**Subcellular  
Location:** Cytoplasm**— VALIDATION IMAGES —**

Sample: Lane1: mouse brain Lysate at 25 ug  
Lane2: mouse kidney Lysate at 25 ug Primary:  
Anti-PPP2R5D(bs-11992R) at 1/300 dilution  
Secondary: IRDye800CW Goat Anti-Rabbit IgG at  
1/20000 dilution Predicted band size: 70kD  
Observed band size: 78kD



Tissue/cell: rat brain tissue; 4%  
Paraformaldehyde-fixed and paraffin-  
embedded; Antigen retrieval: citrate buffer (  
0.01M, pH 6.0 ), Boiling bathing for 15min; Block  
endogenous peroxidase by 3% Hydrogen  
peroxide for 30min; Blocking buffer (normal goat  
serum,C-0005) at 37°C for 20 min; Incubation:  
Anti-PPP2R5D Polyclonal Antibody,  
Unconjugated(bs-11992R) 1:200, overnight at  
4°C, followed by conjugation to the secondary  
antibody(SP-0023) and DAB(C-0010) staining