

bs-11989R**[Primary Antibody]****Creatine kinase B type Rabbit pAb****BioSS**
ANTIBODIES

www.bioss.com.cn

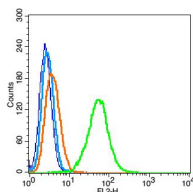
sales@bioss.com.cn

techsupport@bioss.com.cn

400-901-9800

— DATASHEET —

Host: Rabbit Clonality: Polyclonal GeneID: 1152 Target: Creatine kinase B type Immunogen: KLH conjugated synthetic peptide derived from human Creatine kinase B type: 234-280/381. Purification: affinity purified by Protein A Concentration: 1mg/ml Storage: 0.01M TBS (pH7.4) with 1% BSA, 0.02% Proclin300 and 50% Glycerol. Shipped at 4°C. Store at -20°C for one year. Avoid repeated freeze/thaw cycles. Background: The Creatine Kinase MB (CK-MB) isoenzyme is predominantly found in the myocardium (heart muscle). Following a heart attack (myocardial infarction), damaged cells release CK-MB into the blood; these elevated CK levels can be seen 4-8 hours post-infarction and remain elevated for a few days. This makes creatine kinase a useful biomarker for assessing damage to CK-rich tissues, as in cases of rhabdomyolysis (severe muscle breakdown), acute kidney injury, and heart attack.	Isotype: IgG SWISS: P06732	Applications: Flow-Cyt (1µg/Test) Reactivity: Rat (predicted: Human, Mouse, Sheep, Cow, Chicken) Predicted MW.: 43 kDa Subcellular Location: Cytoplasm
--	---	---

— VALIDATION IMAGES —

Blank control: RSC96(blue), the cells were fixed with 2% paraformaldehyde (10 min) and then permeabilized with ice-cold 90% methanol for 30 min on ice.. Isotype Control Antibody: Rabbit IgG(orange) ; Secondary Antibody: Goat anti-rabbit IgG-FITC(white blue), Dilution: 1:100 in 1 X PBS containing 0.5% BSA ; Primary Antibody Dilution: 1µg in 100 µL1X PBS containing 0.5% BSA(green).