

**bs-7054R**

**[ Primary Antibody ]**

## ELOVL5 Rabbit pAb

**Bioss**  
ANTIBODIES

www.bioss.com.cn

sales@bioss.com.cn

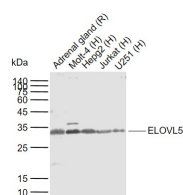
techsupport@bioss.com.cn

400-901-9800

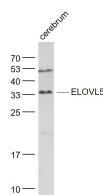
### DATASHEET

<b>Host:</b> Rabbit	<b>Isotype:</b> IgG	<b>Applications:</b> WB (1:500-2000)
<b>Clonality:</b> Polyclonal		<b>Reactivity:</b> Human, Rat (predicted: Mouse, Rabbit, Dog)
<b>GeneID:</b> 60481	<b>SWISS:</b> Q9NYP7	<b>Predicted MW.:</b> 33 kDa
<b>Target:</b> ELOVL5		<b>Subcellular Location:</b> Cell membrane ,Cytoplasm
<b>Immunogen:</b> KLH conjugated synthetic peptide derived from human ELOVL5: 211-299/299.		
<b>Purification:</b> affinity purified by Protein A		
<b>Concentration:</b> 1mg/ml		
<b>Storage:</b> 0.01M TBS (pH7.4) with 1% BSA, 0.02% Proclin300 and 50% Glycerol. Shipped at 4°C. Store at -20°C for one year. Avoid repeated freeze/thaw cycles.		
<b>Background:</b> Condensing enzyme that catalyzes the synthesis of monounsaturated and of polyunsaturated very long chain fatty acids Acts specifically toward polyunsaturated acyl-CoA with the higher activity toward C18:3(n-6) acyl-CoA. Tissue specificity: Ubiquitous. Highly expressed in the adrenal gland and testis. Weekly expressed in prostate, lung and brain.		

### VALIDATION IMAGES



Sample: Lane 1: Rat Adrenal gland tissue lysates  
Lane 2: Human Molt-4 cell lysates Lane 3: Human HepG2 cell lysates Lane 4: Human Jurkat cell lysates Lane 5: Human U251 cell lysates Primary: Anti-ELOVL5 (bs-7054R) at 1/1000 dilution Secondary: IRDye800CW Goat Anti-Rabbit IgG at 1/20000 dilution Predicted band size: 33 kDa Observed band size: 33 kDa



Sample: Cerebrum (Rat) Lysate at 40 ug Primary: Anti- ELOVL5 (bs-7054R) at 1/1000 dilution Secondary: IRDye800CW Goat Anti-Rabbit IgG at 1/20000 dilution Predicted band size: 33 kD Observed band size: 34 kD

### SELECTED CITATIONS

- **[IF=5.3]** Guanlin Wu. et al. miR-218-5p promotes hepatic lipogenesis through targeting Elovl5 in non-alcoholic fatty liver disease. BIOCHEM PHARMACOL. 2024 Aug;226:116411 WB ;Mouse. 38972428