

**bs-4691R****[ Primary Antibody ]**

## Galactocerebrosidase Rabbit pAb

**BioSS**  
ANTIBODIES

www.bioss.com.cn

sales@bioss.com.cn

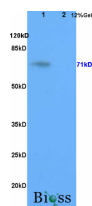
techsupport@bioss.com.cn

400-901-9800

### — DATASHEET —

<b>Host:</b> Rabbit	<b>Isotype:</b> IgG	<b>Applications:</b> <b>WB</b> (1:500-2000)
<b>Clonality:</b> Polyclonal		<b>IHC-P</b> (1:100-500)
<b>GeneID:</b> 2581	<b>SWISS:</b> P54803	<b>IHC-F</b> (1:100-500)
<b>Target:</b> Galactocerebrosidase		<b>IF</b> (1:100-500)
<b>Immunogen:</b> KLH conjugated synthetic peptide derived from human Galactocerebrosidase: 301-400/685.		<b>Reactivity:</b> Rat (predicted: Human, Mouse, Rabbit, Pig, Sheep, Cow, Dog, Horse)
<b>Purification:</b> affinity purified by Protein A		
<b>Concentration:</b> 1mg/ml		<b>Predicted MW.:</b> 71 kDa
<b>Storage:</b> 0.01M TBS (pH7.4) with 1% BSA, 0.02% Proclin300 and 50% Glycerol. Shipped at 4°C. Store at -20°C for one year. Avoid repeated freeze/thaw cycles.		<b>Subcellular Location:</b> Cytoplasm
<b>Background:</b> GALC is a lysosomal enzyme that hydrolyzes galactose ester bonds in various galactolipids, including galactosylceramide, galactosylsphingosine, lactosylceramide and monogalactosyldiglyceride. Galactolipids contain glucose and/or galactose, and are found in the brain and other nerve tissue, especially the myelin sheath. Galactosylceramide is a major lipid in myelin, kidney, and epithelial cells of the small intestine and colon. Mutations in the GALC gene that compromise protein function correlate to Krabbe disease (globoid cell leukodystrophy, GLD). GLD is an autosomal recessive condition that affects approximately 1 in 150,000 infants and results in progressive destruction of the nervous system. The “twitcher” mouse is a model system for GLD; the genotype is a premature stop codon (W339X) in the galactosylceramidase (GALC) gene that abolishes enzymatic activity. Alternate transcriptional splice variants, encoding different isoforms, have been characterized.		

### — VALIDATION IMAGES —



Sample: Brain (Rat) Lysate at 40 ug Liver (Rat)  
Lysate at 40 ug Primary: Anti-Galactocerebrosidase  
(bs-4691R) at 1/300 dilution Secondary: HRP  
conjugated Goat-Anti-rabbit IgG (bs-0295G-HRP)  
at 1/5000 dilution Predicted band size: 71 kD  
Observed band size: 71 kD