

**bs-7519R****[ Primary Antibody ]****SEMA4A Rabbit pAb****Bioss**  
**ANTIBODIES**

www.bioss.com.cn

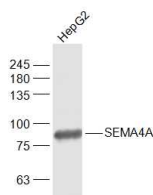
sales@bioss.com.cn

techsupport@bioss.com.cn

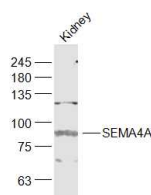
400-901-9800

**— DATASHEET —**

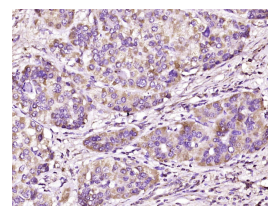
<b>Host:</b> Rabbit <b>Clonality:</b> Polyclonal <b>GeneID:</b> 64218 <b>Target:</b> SEMA4A <b>Immunogen:</b> KLH conjugated synthetic peptide derived from human SEMA4A: 361-460/761. < Extracellular > <b>Purification:</b> affinity purified by Protein A <b>Concentration:</b> 1mg/ml <b>Storage:</b> 0.01M TBS (pH7.4) with 1% BSA, 0.02% Proclin300 and 50% Glycerol. Shipped at 4°C. Store at -20°C for one year. Avoid repeated freeze/thaw cycles. <b>Background:</b> SEMA4A belongs to the semaphorin family of soluble and transmembrane proteins. These proteins play a role in guidance of axonal migration during neuronal development and in immune responses.	<b>Isotype:</b> IgG  <b>Applications:</b> <b>WB</b> (1:500-2000) <b>IHC-P</b> (1:100-500) <b>IHC-F</b> (1:100-500) <b>IF</b> (1:100-500)  <b>Reactivity:</b> Human, Mouse (predicted: Rat, Rabbit, Pig, Cow, Dog)  <b>Predicted MW.:</b> 80 kDa  <b>Subcellular Location:</b> Cell membrane
--	---

**— VALIDATION IMAGES —**

Sample: HepG2(Human) Cell Lysate at 30 ug  
Primary: Anti-SEMA4A (bs-7519R) at 1/1000 dilution  
Secondary: IRDye800CW Goat Anti-Rabbit IgG at 1/20000 dilution  
Predicted band size: 80 kD  
Observed band size: 83 kD



Sample: Kidney (Mouse) Lysate at 40 ug  
Primary: Anti-SEMA4A (bs-7519R) at 1/1000 dilution  
Secondary: IRDye800CW Goat Anti-Rabbit IgG at 1/20000 dilution  
Predicted band size: 80 kD  
Observed band size: 83 kD



Paraformaldehyde-fixed, paraffin embedded (human liver carcinoma); Antigen retrieval by boiling in sodium citrate buffer (pH6.0) for 15min; Block endogenous peroxidase by 3% hydrogen peroxide for 20 minutes; Blocking buffer (normal goat serum) at 37°C for 30min; Antibody incubation with (SEMA4A) Polyclonal Antibody, Unconjugated (bs-7519R) at 1:400 overnight at 4°C, followed by operating according to SP Kit(Rabbit) (sp-0023) instructions and DAB staining.

**— SELECTED CITATIONS —**

- **[IF=3.946]** Marii Azumane. et al. Semaphorin-RhoA signaling regulates HERS maintenance by acting against TGF- $\beta$ -induced EMT. J PERIODONTAL RES. 2022 Dec;; IHC ;Mouse. 36517910