

bs-10138R**[Primary Antibody]****phospho-Eph receptor B1 (Tyr928) Rabbit pAb****Bioss**
ANTIBODIES

www.bioss.com.cn

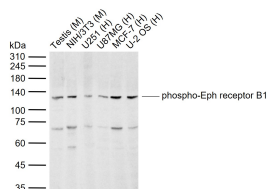
sales@bioss.com.cn

techsupport@bioss.com.cn

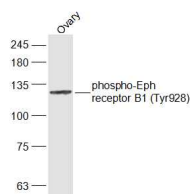
400-901-9800

DATASHEET**Host:** Rabbit**Isotype:** IgG**Clonality:** Polyclonal**GeneID:** 2047**SWISS:** P54762**Target:** Eph receptor B1 (Tyr928)**Immunogen:** KLH conjugated Synthesised phosphopeptide derived from human EphB1 around the phosphorylation site of Tyr928: VQ(p-Y)RD.**Purification:** affinity purified by Protein A**Concentration:** 1mg/ml**Storage:** 0.01M TBS (pH7.4) with 1% BSA, 0.02% Proclin300 and 50% Glycerol.

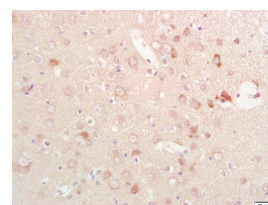
Shipped at 4°C. Store at -20°C for one year. Avoid repeated freeze/thaw cycles.

Background: Ephrin receptors bind members of the ephrin ligand family. They are divided into 2 groups based on the similarity of their extracellular domain sequences and their affinities for binding ephrin-A and ephrin-B ligands. They make up the largest subgroup of the receptor tyrosine kinase (RTK) family. Eph receptor B1 (EphB1) and Eph receptor B2 (EphB2) are receptors for ephrin-B family members. Developing and adult neural tissue express nearly all of the Ephrin receptors and ephrin ligands. Ephrins and ephrin receptors also play a significant role in angiogenesis. EphB2 acts as a tumor suppressor.**Applications:** **WB** (1:500-2000)**IHC-P** (1:100-500)**IHC-F** (1:100-500)**IF** (1:100-500)**Reactivity:** Human, Mouse, Rat**Predicted MW.:** 106 kDa**Subcellular Location:** Cell membrane**VALIDATION IMAGES**

Sample: Lane 1: Mouse Testis tissue lysates Lane 2: Mouse NIH/3T3 cell lysates Lane 3: Human U251 cell lysates Lane 4: Human U87MG cell lysates Lane 5: Human MCF-7 cell lysates Lane 6: Human U-2 OS cell lysates Primary: Anti-phospho-Eph receptor B1 (Tyr928) (bs-10138R) at 1/1000 dilution Secondary: IRDye800CW Goat Anti-Rabbit IgG at 1/20000 dilution Predicted band size: 106 kDa Observed band size: 130 kDa



Sample: Ovary (Mouse) Lysate at 40 ug Primary: Anti-phospho-Eph receptor B1 (Tyr928) (bs-10138R) at 1/300 dilution Secondary: IRDye800CW Goat Anti-Rabbit IgG at 1/20000 dilution Predicted band size: 106 kD Observed band size: 121 kD



Tissue/cell: Rat brain; 4% Paraformaldehyde-fixed and paraffin-embedded; Antigen retrieval: citrate buffer (0.01M, pH 6.0), Boiling bathing for 15min; Block endogenous peroxidase by 3% Hydrogen peroxide for 30min; Blocking buffer (normal goat serum,C-0005) at 37°C for 20 min; Incubation: Anti-phospho-EphB1/Eph receptor B1(Tyr928) Polyclonal Antibody, Unconjugated (bs-10138R) 1:200, overnight at 4°C, followed by conjugation to the secondary antibody(SP-0023) and DAB(C-0010) staining