

bs-7032R**[Primary Antibody]****EphA3 Rabbit pAb****BioSS**
ANTIBODIES

www.bioss.com.cn

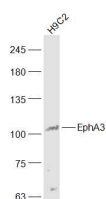
sales@bioss.com.cn

techsupport@bioss.com.cn

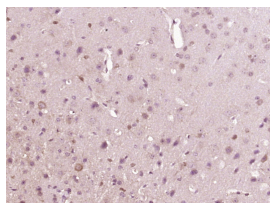
400-901-9800

— DATASHEET —

Host: Rabbit Clonality: Polyclonal GeneID: 2042 Target: EphA3 Immunogen: KLH conjugated synthetic peptide derived from human EphA3/Eph receptor A3: 401-500/983. Purification: affinity purified by Protein A Concentration: 1mg/ml Storage: 0.01M TBS (pH7.4) with 1% BSA, 0.02% Proclin300 and 50% Glycerol. Shipped at 4°C. Store at -20°C for one year. Avoid repeated freeze/thaw cycles. Background: EphA3 is a member of the Ephrin (Eph) family. The Ephrins and Eph-related receptors comprise the largest subfamily of receptor protein-tyrosine kinases and have been implicated in mediating developmental events, especially in the nervous system and in erythropoiesis. Based on their structures and sequence relationships, ephrins are divided into the Ephrin A (EphA) class, which are anchored to the membrane by a glycosylphosphatidylinositol linkage, and the Ephrin B (EphB) class, which are transmembrane proteins. Receptors in the EPH subfamily typically have a single kinase domain and an extracellular region containing a Cys-rich domain and 2 fibronectin type III repeats.	Isotype: IgG SWISS: P29320 Applications: WB (1:500-2000) IHC-P (1:100-500) IHC-F (1:100-500) IF (1:100-500) Reactivity: Mouse, Rat (predicted: Human, Sheep, Cow, Dog, Horse) Predicted MW.: 106 kDa Subcellular Location: Secreted ,Cell membrane
---	---

— VALIDATION IMAGES —

Sample: H9C2(Rat) Cell Lysate at 30 ug Primary:
Anti-EphA3 (bs-7032R) at 1/1000 dilution
Secondary: IRDye800CW Goat Anti-Rabbit IgG at
1/20000 dilution Predicted band size: 106 kD
Observed band size: 106 kD



Paraformaldehyde-fixed, paraffin embedded
(Mouse brain); Antigen retrieval by boiling in
sodium citrate buffer (pH6.0) for 15min; Block
endogenous peroxidase by 3% hydrogen
peroxide for 20 minutes; Blocking buffer (normal
goat serum) at 37°C for 30min; Antibody
incubation with (EphA3) Polyclonal Antibody,
Unconjugated (bs-7032R) at 1:400 overnight at
4°C, followed by operating according to SP
Kit(Rabbit) (sp-0023) instructions and DAB
staining.