

bs-14553R**[Primary Antibody]****eIF4H Rabbit pAb****BioSS**
ANTIBODIES

www.bioss.com.cn

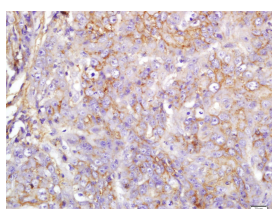
sales@bioss.com.cn

techsupport@bioss.com.cn

400-901-9800

— DATASHEET —

Host: Rabbit	Isotype: IgG	Applications: IHC-P (1:100-500)
Clonality: Polyclonal		IHC-F (1:100-500)
GeneID: 7458	SWISS: Q15056	IF (1:100-500)
Target: eIF4H		Reactivity: Human (predicted: Mouse, Rat, Rabbit, Pig, Sheep, Cow, Dog, Horse, Orangutan)
Immunogen: KLH conjugated synthetic peptide derived from human eIF4H: 31-130/248.		Predicted MW.: 25 kDa
Purification: affinity purified by Protein A		Subcellular Location: Cytoplasm
Concentration: 1mg/ml		
Storage: 0.01M TBS (pH7.4) with 1% BSA, 0.02% Proclin300 and 50% Glycerol. Shipped at 4°C. Store at -20°C for one year. Avoid repeated freeze/thaw cycles.		
Background: This gene encodes one of the translation initiation factors, which functions to stimulate the initiation of protein synthesis at the level of mRNA utilization. This gene is deleted in Williams syndrome, a multisystem developmental disorder caused by the deletion of contiguous genes at 7q11.23. Alternative splicing of this gene generates 2 transcript variants. [provided by RefSeq, Jul 2008]		

— VALIDATION IMAGES —

Tissue/cell: human laryngocarcinoma; 4% Paraformaldehyde-fixed and paraffin-embedded; Antigen retrieval: citrate buffer (0.01M, pH 6.0), Boiling bathing for 15min; Block endogenous peroxidase by 3% Hydrogen peroxide for 30min; Blocking buffer (normal goat serum, C-0005) at 37°C for 20 min; Incubation: Anti-eIF4H Polyclonal Antibody, Unconjugated(bs-14553R) 1:200, overnight at 4°C, followed by conjugation to the secondary antibody(SP-0023) and DAB(C-0010) staining