

---

## EIF3D Rabbit pAb

Catalog Number: bs-14543R

Target Protein: EIF3D

Concentration: 1mg/ml

Form: Liquid

Host: Rabbit

Clonality: Polyclonal

Isotype: IgG

Applications: WB (1:500-2000)

Reactivity: Mouse (predicted:Human, Rat, Rabbit, Pig, Cow, Dog, Horse)

Predicted MW: 64 kDa

Subcellular Cytoplasm

Locations:

Entrez Gene: 8664

Swiss Prot: O15371

Source: KLH conjugated synthetic peptide derived from human EIF3D: 101-200/548.

Purification: affinity purified by Protein A

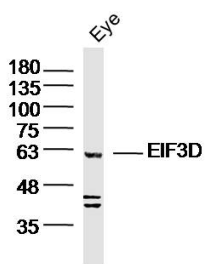
Storage: 0.01M TBS (pH7.4) with 1% BSA, 0.02% Proclin300 and 50% Glycerol.

Shipped at 4°C. Store at -20°C for one year. Avoid repeated freeze/thaw cycles.

**Background:** Eukaryotic translation initiation factor-3 (eIF3), the largest of the eIFs, is a multiprotein complex composed of at least ten nonidentical subunits. The complex binds to the 40S ribosome and helps maintain the 40S and 60S ribosomal subunits in a dissociated state. It is also thought to play a role in the formation of the 40S initiation complex by interacting with the ternary complex of eIF2/GTP/methionyl-tRNA, and by promoting mRNA binding. The protein encoded by this gene is the major RNA binding subunit of the eIF3 complex.  
[provided by RefSeq, Jul 2008]

## VALIDATION IMAGES

---



Sample: Eye (Mouse) Lysate at 40 ug Primary: Anti-EIF3D(bs-14543R) at 1/300 dilution Secondary: IRDye800CW  
Goat Anti-Rabbit IgG at 1/20000 dilution Predicted band size: 64kD Observed band size: 64kD