

bs-22173R**[Primary Antibody]****BioSS**
ANTIBODIES

www.bioss.com.cn

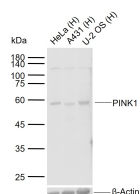
sales@bioss.com.cn

techsupport@bioss.com.cn

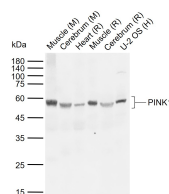
400-901-9800

PINK1 Rabbit pAb**DATASHEET**

Host: Rabbit	Isotype: IgG	Applications: WB (1:500-2000)
Clonality: Polyclonal		
GeneID: 65018	SWISS: Q9BXM7	
Target: PINK1		
Immunogen: KLH conjugated synthetic peptide derived from human PINK1: 441-540/581.		
Purification: affinity purified by Protein A		Reactivity: Human, Mouse, Rat
Concentration: 1mg/ml		
Storage: 0.01M TBS (pH7.4) with 1% BSA, 0.02% Proclin300 and 50% Glycerol. Shipped at 4°C. Store at -20°C for one year. Avoid repeated freeze/thaw cycles.		
Background: This gene encodes a serine/threonine protein kinase that localizes to mitochondria. It is thought to protect cells from stress-induced mitochondrial dysfunction. Mutations in this gene cause one form of autosomal recessive early-onset Parkinson disease. [provided by RefSeq, Jul 2008]		
		Predicted MW.: 64 kDa
		Subcellular Location: Cytoplasm

VALIDATION IMAGES

Sample: Lane 1: Human HeLa cell lysates Lane 2: Human A431 cell lysates Lane 3: Human U-2OS cell lysates Primary: Anti- PINK1 (bs-22173R) at 1/1000 dilution Secondary: IRDye800CW Goat Anti-Rabbit IgG at 1/20000 dilution Predicted band size: 64 kDa Observed band size: 60 kDa



Sample: Lane 1: Mouse Muscle tissue lysates Lane 2: Mouse Cerebrum tissue lysates Lane 3: Rat Heart tissue lysates Lane 4: Rat Muscle tissue lysates Lane 5: Rat Cerebrum tissue lysates Lane 6: Human U-2 OS cell lysates Primary: Anti-PINK1 (bs-22173R) at 1/500 dilution Secondary: IRDye800CW Goat Anti-Rabbit IgG at 1/20000 dilution Predicted band size: 64 kDa Observed band size: 58 kDa

SELECTED CITATIONS

- **[IF=7.4]** Wenjuan Feng. et al. Targeting ERS-mitophagy in hippocampal neurons to explore the improvement of memory by tea polyphenols in aged type 2 diabetic rats. FREE RADICAL BIO MED. 2024 Mar;213:293 WB ;Rat. 38286317
- **[IF=5.4]** Xiaoxiao Shan. et al. Kai-Xin-San ameliorates Alzheimer's disease-related neuropathology and cognitive impairment in APP/PS1 mice via the mitochondrial autophagy-NLRP3 inflammasome pathway. J ETHNOPHARMACOL. 2024 Apr;:118145 WB ;Mouse. 38582153
- **[IF=4.8]** Feng Pan. et al. Panax notoginseng saponins treat steroid-resistant lupus nephritis by inhibiting macrophage-derived exosome-induced injury in glomerular endothelial cells via the mitochondrial Autophagy-NLRP3 pathway..JOURNAL OF ETHNOPHARMACOLOGY.2025 Mar 13:343:119475. Western blot ;Mouse. 39947368
- **[IF=4.109]** Yihui Huo. et al. Exposure to copper activates mitophagy and endoplasmic reticulum stress-mediated apoptosis in chicken (Gallus gallus) cerebrum. ENVIRON TOXICOL. 2022 Nov;: WB ;Chicken. 36350156

Important Note: This product as supplied is intended for research use only, not for use in human, therapeutic or diagnostic applications.

- **[IF=2.5]** Taiyu Chen. et al. Neferine Ameliorates Slow-Transmitting Constipation by Inducing PINK1/Parkin-Mediated Mitophagy in Protective Enteric Glial Cells. J MICROBIOL BIOTECHN. 2025 Apr;35:e2412022 WB ;Human,Rat. 40295194