

bs-8723R

[Primary Antibody]

EIF2S2 Rabbit pAb

BioSS
ANTIBODIES

www.bioss.com.cn

sales@bioss.com.cn

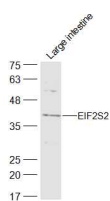
techsupport@bioss.com.cn

400-901-9800

— DATASHEET —

Host: Rabbit	Isotype: IgG	Applications: WB (1:500-2000)
Clonality: Polyclonal		Reactivity: Mouse (predicted: Human, Rat, Pig, Sheep, Cow, Dog)
GeneID: 8894	SWISS: P20042	
Target: EIF2S2		Predicted MW.: 38 kDa
Immunogen: KLH conjugated synthetic peptide derived from human EIF2S2: 2-100/333.		Subcellular Location: Cytoplasm
Purification: affinity purified by Protein A		
Concentration: 1mg/ml		
Storage: Preservative: 0.02% Proclin300, Constituents: 1% BSA, 0.01M PBS, pH7.4. Shipped at 4°C. Store at -20°C for one year. Avoid repeated freeze/thaw cycles.		

— VALIDATION IMAGES —



Sample: Large intestine (Mouse) Lysate at 40 ug
Primary: Anti-EIF2S2 (bs-8723R) at 1/300 dilution
Secondary: IRDye800CW Goat Anti-Rabbit IgG at 1/20000 dilution Predicted band size: 38 kD
Observed band size: 38 kD