

**bs-20824R**

**[ Primary Antibody ]**

## CK5+CK6 Rabbit pAb

**Bioss**  
ANTIBODIES

www.bioss.com.cn

sales@bioss.com.cn

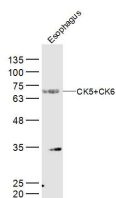
techsupport@bioss.com.cn

400-901-9800

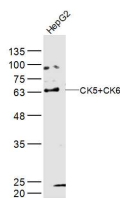
### — DATASHEET —

<b>Host:</b> Rabbit	<b>Isotype:</b> IgG	<b>Applications:</b> <b>WB</b> (1:500-2000) <b>IHC-P</b> (1:100-500) <b>IHC-F</b> (1:100-500) <b>IF</b> (1:100-500) <b>Flow-Cyt</b> (1µg/Test)
<b>Clonality:</b> Polyclonal		
<b>GeneID:</b> 3852	<b>SWISS:</b> P13647	
<b>Target:</b> CK5+CK6		
<b>Immunogen:</b> KLH conjugated synthetic peptide derived from human CK5+CK6: 161-220/590.		
<b>Purification:</b> affinity purified by Protein A		<b>Reactivity:</b> Human, Mouse
<b>Concentration:</b> 1mg/ml		
<b>Storage:</b> Preservative: 0.02% Proclin300, Constituents: 1% BSA, 0.01M PBS, pH7.4. Shipped at 4°C. Store at -20°C for one year. Avoid repeated freeze/thaw cycles.		<b>Predicted MW.:</b> 62/60 kDa
<b>Background:</b> Cytokeratins (CK) are intermediate filaments of epithelial cells, both in keratinising tissue (ie., skin) and non keratinising cells (ie., mesothelial cells). Although not a traditional marker for endothelial cells, cytokeratins have also been found in some microvascular endothelial cells. At least 20 different cytokeratins (CK) in the molecular range of 40 to 70 kDa and isoelectric points of 5 to 8.5 can be identified using two dimensional gel electrophoresis. Biochemically, most members of the CK family fall into one of two classes, type I (acidic polypeptides) and type II (basic polypeptides). At least one member of the acidic family and one member of the basic family is expressed in all epithelial cells. Defects in KRT5 are a cause of epidermolysis bullosa simplex.		<b>Subcellular Location:</b> Extracellular matrix, Cytoplasm, Nucleus

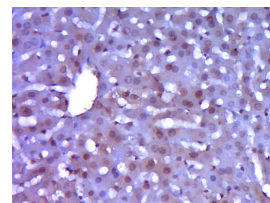
### — VALIDATION IMAGES —



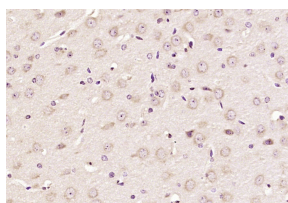
Sample: Esophagus (Mouse) Lysate at 40 ug  
Primary: Anti-CK5+CK6 (bs-20824R) at 1/300 dilution  
Secondary: IRDye800CW Goat Anti-Rabbit IgG at 1/20000 dilution  
Predicted band size: 62/60 kD  
Observed band size: 62/60 kD



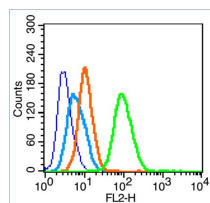
Sample: HepG2(Human) Cell Lysate at 30 ug  
Primary: Anti-CK5+CK6 (bs-20824R) at 1/300 dilution  
Secondary: IRDye800CW Goat Anti-Rabbit IgG at 1/20000 dilution  
Predicted band size: 62/60 kD  
Observed band size: 62/60 kD



Paraformaldehyde-fixed, paraffin embedded (Mouse liver); Antigen retrieval by boiling in sodium citrate buffer (pH6.0) for 15min; Block endogenous peroxidase by 3% hydrogen peroxide for 20 minutes; Blocking buffer (normal goat serum) at 37°C for 30min; Antibody incubation with (CK5+CK6) Polyclonal Antibody, Unconjugated (bs-20824R) at 1:400 overnight at 4°C, followed by operating according to SP Kit(Rabbit) (sp-0023) instructions and DAB staining.



Paraformaldehyde-fixed, paraffin embedded (mouse brain); Antigen retrieval by boiling in



Blank control (blue line): HeLa (fixed with 70% ethanol (Overnight at 4°C) and then

**Important Note:** This product as supplied is intended for research use only, not for use in human, therapeutic or diagnostic applications.

sodium citrate buffer (pH6.0) for 15min; Block endogenous peroxidase by 3% hydrogen peroxide for 20 minutes; Blocking buffer (normal goat serum) at 37°C for 30min; Antibody incubation with (CK5+CK6) Polyclonal Antibody, Unconjugated (bs-20824R) at 1:200 overnight at 4°C, followed by operating according to SP Kit(Rabbit) (sp-0023) instructions and DAB staining.

permeabilized with 90% ice-cold methanol for 30 min at -20°C). Primary Antibody (green line): Rabbit Anti-CK5+CK6 antibody (bs-20824R), Dilution: 1µg /10<sup>6</sup> cells; Isotype Control Antibody (orange line): Rabbit IgG . Secondary Antibody (white blue line): Goat anti-rabbit IgG-PE, Dilution: 1µg /test.

---

## — SELECTED CITATIONS —

- **[IF=40.8]** Chao Liu. et al. Molecular classification of hormone receptor-positive /HER2-positive breast cancer reveals potential neoadjuvant therapeutic strategies..Signal Transduction and Targeted Therapy.2025 Mar 26;10(1):97. IHC ;Human. 40133264
- **[IF=8]** Zhou Xiaofeng. et al. The Hippo-YAP signaling pathway drives CD24-mediated immune evasion in esophageal squamous cell carcinoma via macrophage phagocytosis. ONCOGENE. 2024 Jan;;1-16 IHC ;Mouse. 38168654