

bs-18135R**[Primary Antibody]****phospho-IL13RA1 (Tyr405) Rabbit pAb****BioSS**
ANTIBODIES

www.bioss.com.cn

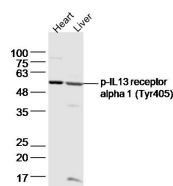
sales@bioss.com.cn

techsupport@bioss.com.cn

400-901-9800

— DATASHEET —

Host: Rabbit	Isotype: IgG	Applications: WB (1:500-2000)
Clonality: Polyclonal		Reactivity: Mouse (predicted: Human, Rat, Rabbit, Pig, Horse)
GeneID: 3597	SWISS: P78552	
Target: IL13RA1 (Tyr405)		Predicted MW.: 42 kDa
Immunogen: KLH conjugated Synthesised phosphopeptide derived from human IL13 receptor alpha 1 around the phosphorylation site of Tyr405: DI(p-Y)EK.		Subcellular Location: Cell membrane
Purification: affinity purified by Protein A		
Concentration: 1mg/ml		
Storage: 0.01M TBS (pH7.4) with 1% BSA, 0.02% Proclin300 and 50% Glycerol. Shipped at 4°C. Store at -20°C for one year. Avoid repeated freeze/thaw cycles.		
Background: The protein encoded by this gene is a subunit of the interleukin 13 receptor. This subunit forms a receptor complex with IL4 receptor alpha, a subunit shared by IL13 and IL4 receptors. This subunit serves as a primary IL13-binding subunit of the IL13 receptor, and may also be a component of IL4 receptors. This protein has been shown to bind tyrosine kinase TYK2, and thus may mediate the signaling processes that lead to the activation of JAK1, STAT3 and STAT6 induced by IL13 and IL4. [provided by RefSeq, Jul 2008]		

— VALIDATION IMAGES —

Sample: Heart (Mouse) Lysate at 40 ug Liver (Mouse) Lysate at 40 ug
Primary: Anti-p-IL13receptor alpha 1 (Tyr405) (bs-18135R) at 1/300 dilution
Secondary: IRDye800CW Goat Anti-Rabbit IgG at 1/20000 dilution
Predicted band size: 42 kD
Observed band size: 42 kD