

**bs-21475R****[ Primary Antibody ]****CALCRL Rabbit pAb****Bioss**  
**ANTIBODIES**

www.bioss.com.cn

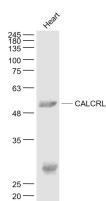
sales@bioss.com.cn

techsupport@bioss.com.cn

400-901-9800

**— DATASHEET —**

<b>Host:</b> Rabbit	<b>Isotype:</b> IgG	<b>Applications:</b> WB (1:500-2000)
<b>Clonality:</b> Polyclonal		
<b>GeneID:</b> 10203	<b>SWISS:</b> Q16602	
<b>Target:</b> CALCRL		
<b>Immunogen:</b> KLH conjugated synthetic peptide derived from human CALCRL: 351-450/461.		
<b>Purification:</b> affinity purified by Protein A		<b>Reactivity:</b> Mouse (predicted: Human, Rat, Rabbit, Pig, Sheep, Cow)
<b>Concentration:</b> 1mg/ml		<b>Predicted MW.:</b> 50 kDa
<b>Storage:</b> 0.01M TBS (pH7.4) with 1% BSA, 0.02% Proclin300 and 50% Glycerol. Shipped at 4°C. Store at -20°C for one year. Avoid repeated freeze/thaw cycles.		<b>Subcellular Location:</b> Cell membrane
<b>Background:</b> bs-1860P is one synthetic peptide derived from human CGRPR1. CRLR is a receptor for calcitonin gene related peptide type 1. The activity of CRLR is mediated by G proteins which activate adenylyl cyclase. CRLR expression has been reported in brain, lung, blood vessel, liver, and intestinal tract. ESTs have been isolated from B Cell/lung/testis, bone marrow, embryo, lung, and synovium libraries.		

**— VALIDATION IMAGES —**

Sample: Heart (Mouse) Lysate at 40 ug Primary:

Anti- CALCRL (bs-21475R) at 1/1000 dilution

Secondary: IRDye800CW Goat Anti-Rabbit IgG at

1/20000 dilution Predicted band size: 50 kD

Observed band size: 50 kD