

ZDHHC2/ZNF372 Rabbit pAb

Catalog Number: bs-18480R

Target Protein: ZDHHC2/ZNF372

Concentration: 1mg/ml

Form: Liquid

Host: Rabbit

Clonality: Polyclonal

Isotype: IgG

Applications: WB (1:500-2000)

Reactivity: Mouse (predicted:Human, Rat, Rabbit, Pig, Chicken, Dog, Horse, Monkey)

Predicted MW: 42 kDa

Entrez Gene: 51201

Swiss Prot: Q9UIJ5

Source: KLH conjugated synthetic peptide derived from human ZDHHC2/ZNF372: 201-300/367.

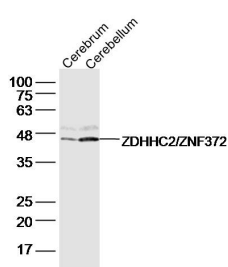
Purification: affinity purified by Protein A

Storage: 0.01M TBS (pH7.4) with 1% BSA, 0.02% Proclin300 and 50% Glycerol.

Shipped at 4°C. Store at -20°C for one year. Avoid repeated freeze/thaw cycles.

Background: ZDHHC2 is a 367 amino acid multi-pass membrane protein that contains one DHHC-type zinc finger. The ubiquitously expressed ZDHHC2 protein functions as a palmitoyltransferase that uses palmitoyl-CoA and catalyzes the conversion of target proteins, namely GAP-43 and PSD-95, to S-palmitoyl proteins. Defects in the gene encoding ZDHHC2 are found in colorectal cancer and hepatocellular carcinoma, suggesting a role for ZDHHC2 in tumorigenesis. The gene encoding human ZDHHC2 maps to chromosome 8, which consists of nearly 146 million base pairs, houses more than 800 genes and is associated with a variety of diseases and malignancies.

VALIDATION IMAGES



Sample: Cerebrum (Mouse) Lysate at 40 ug Cerebellum (Mouse) Lysate at 40 ug Primary: Anti-ZDHHC2/ZNF372 (bs-18480R) at 1/300 dilution Secondary: IRDye800CW Goat Anti-Rabbit IgG at 1/20000 dilution Predicted band size: 42 kD Observed band size: 45 kD