

bs-18807R

[Primary Antibody]

Methylated Lysine (di methyl , mono methyl) Rabbit pAb

BioSS
ANTIBODIES

www.bioss.com.cn

sales@bioss.com.cn

techsupport@bioss.com.cn

400-901-9800

— DATASHEET —

Host: Rabbit

Isotype: IgG

Clonality: Polyclonal

Target: Methylated Lysine (di methyl , mono methyl)

Purification: affinity purified by Protein A

Concentration: 1mg/ml

Storage: 0.01M TBS (pH7.4) with 1% BSA, 0.02% Proclin300 and 50% Glycerol.
Shipped at 4°C. Store at -20°C for one year. Avoid repeated freeze/thaw cycles.

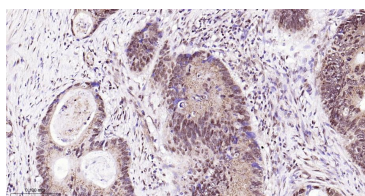
Applications: IHC-P (1:100-500)

IHC-F (1:100-500)

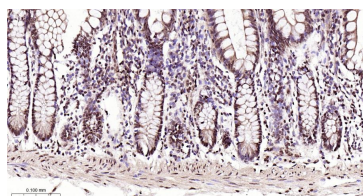
IF (1:100-500)

Reactivity: Species independent

— VALIDATION IMAGES —



Paraformaldehyde-fixed, paraffin embedded Human Colon Cancer; Antigen retrieval by boiling in sodium citrate buffer (pH6.0) for 15 min; The section was incubated with Methylated Lysine (di methyl , mono methyl) Polyclonal Antibody, Unconjugated (bs-18807R) at 1:200 overnight at 4°C, followed by conjugation to the bs-0295G-HRP and DAB (C-0010) staining.



Paraformaldehyde-fixed, paraffin embedded Human Small Intestine; Antigen retrieval by boiling in sodium citrate buffer (pH6.0) for 15 min; The section was incubated with Methylated Lysine (di methyl , mono methyl) Polyclonal Antibody, Unconjugated (bs-18807R) at 1:200 overnight at 4°C, followed by conjugation to the bs-0295G-HRP and DAB (C-0010) staining.