

**bs-20413R****[ Primary Antibody ]**

**BioSS**  
ANTIBODIES

www.bioss.com.cn

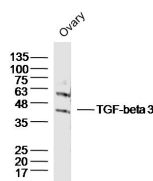
sales@bioss.com.cn

techsupport@bioss.com.cn

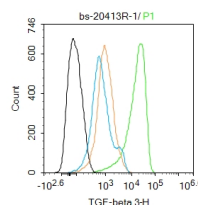
400-901-9800

**TGF-beta 3 Rabbit pAb****— DATASHEET —**

<b>Host:</b> Rabbit	<b>Isotype:</b> IgG	<b>Applications:</b> <b>WB</b> (1:500-2000) <b>Flow-Cyt</b> (1ug/Test)
<b>Clonality:</b> Polyclonal		
<b>GeneID:</b> 7043	<b>SWISS:</b> P10600	<b>Reactivity:</b> Human, Mouse (predicted: Rat)
<b>Target:</b> TGF-beta 3		
<b>Immunogen:</b> KLH conjugated synthetic peptide derived from human TGF-beta 3: 321-412/412.		
<b>Purification:</b> affinity purified by Protein A		
<b>Concentration:</b> 1mg/ml		
<b>Storage:</b> Preservative: 0.02% Proclin300, Constituents: 1% BSA, 0.01M PBS, pH7.4. Shipped at 4°C. Store at -20°C for one year. Avoid repeated freeze/thaw cycles.		
<b>Background:</b> Transforming growth factor beta 3(TGF β3) is one of three closely related mammalian members of the large TGF β superfamily, TGF-β1, β2, and β3, signal through the same receptor and elicit similar biological responses. The mammalian TGF-β3 controls a vast array of biological processes including immune regulation, cell proliferation, epithelial-mesenchymal transition, and the bone formation. It is generally recognized to facilitate chondrogenic differentiation of precursor cells. It may also have a dose-dependent inhibitory effect on osteogenesis. Recombinant Human TGF-β3 is a 25.0 kDa protein composed of two identical 112 amino acid polypeptide chains linked by a single disulfide bond.		
		<b>Predicted MW.:</b> 30/47 kDa
		<b>Subcellular Location:</b> Secreted

**— VALIDATION IMAGES —**

Sample:Ovary (Mouse)Lysate at 40 ug Primary:  
Anti-TGF-beta 3(bs-20413R)at 1/300 dilution  
Secondary: IRDye800CW Goat Anti-RabbitIgG at  
1/20000 dilution Predicted band size: 30'47kD  
Observed band size: 47kD



Blank control (black line) :SH-SY5Y. Primary Antibody (green line): Rabbit Anti-TGF-beta 3 antibody (bs-20413R) Dilution:1ug/Test; Secondary Antibody : Goat anti-rabbit IgG-AF488 Dilution: 0.5ug/Test. Negative control (white blue line) : PBS Isotype control (orange line) : Normal Rabbit IgG Protocol The cells were fixed with 4% PFA (10min at room temperature)and then permeabilized with 90% ice-cold methanol for 20 min at -20°C.The cells were then incubated in 5%BSA to block non-specific protein-protein interactions for 30 min at room temperature .Cells stained with Primary Antibody for 30 min at room temperature. The secondary antibody used for 40 min at room temperature. Acquisition of 20,000 events was performed.