

---

## GGH Rabbit pAb

Catalog Number: bs-20360R

Target Protein: GGH

Concentration: 1mg/ml

Form: Liquid

Host: Rabbit

Clonality: Polyclonal

Isotype: IgG

Applications: WB (1:500-2000)

Reactivity: Human, Mouse (predicted:Rat)

Predicted MW: 34 kDa

Entrez Gene: 8836

Swiss Prot: Q92820

Source: KLH conjugated synthetic peptide derived from human GGH: 151-250/318.

Purification: affinity purified by Protein A

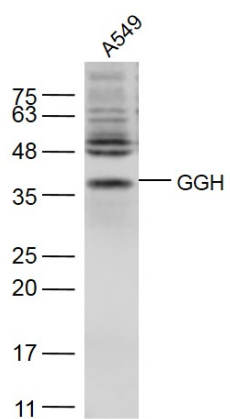
Storage: Preservative: 0.02% Proclin300, Constituents: 1% BSA, 0.01M PBS, pH7.4.

Shipped at 4°C. Store at -20°C for one year. Avoid repeated freeze/thaw cycles.

**Background:** GGH is a 318 amino acid protein that is secreted into the extracellular space and is also localized to both the lysosome and the melanosome. Functioning as a hydrolase, GGH contains one gamma-glutamyl hydrolase domain through which it catalyzes the hydrolysis of polyglutamate sidechains from pteroylpolyglutamates, specifically hydrolyzing gamma-glutamyl bonds. Via its catalytic activity, GGH may play a role in the bioavailability and metabolic activity of pteroylpolyglutamates. Polymorphisms in the gene encoding GGH are associated with rheumatoid arthritis, inflammatory bowel disease and various cancers. The gene encoding GGH maps to human chromosome 8, which consists of nearly 146 million base pairs, houses more than 800 genes and is associated with a variety of diseases and malignancies.

### VALIDATION IMAGES

---



Sample: A549(Human) Cell Lysate at 40 ug Primary: Anti-GGH (bs-20360R) at 1/300 dilution Secondary: IRDye800CW Goat Anti-Rabbit IgG at 1/20000 dilution Predicted band size: 34 kD Observed band size: 34 kD