

bs-20352R**[Primary Antibody]****BioSS**
ANTIBODIES

www.bioss.com.cn

sales@bioss.com.cn

techsupport@bioss.com.cn

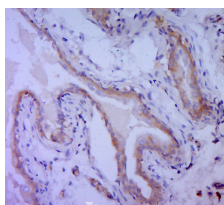
400-901-9800

Bcl-2 Rabbit pAb

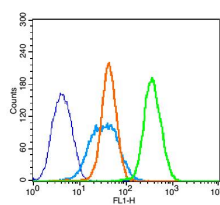
— DATASHEET —

<p>Host: Rabbit</p> <p>Clonality: Polyclonal</p> <p>GeneID: 596</p> <p>Target: Bcl-2</p> <p>Immunogen: KLH conjugated synthetic peptide derived from human Bcl-2: 141-239/239.</p> <p>Purification: affinity purified by Protein A</p> <p>Concentration: 1mg/ml</p> <p>Storage: Preservative: 0.02% Proclin300, Constituents: 1% BSA, 0.01M PBS, pH7.4. Shipped at 4°C. Store at -20°C for one year. Avoid repeated freeze/thaw cycles.</p> <p>Background: The Bcl-2 gene was isolated at the chromosomal breakpoint of t(14;18)-bearing follicular B cell lymphomas(1,2).Bcl-2 blocks cell death following a variety of stimuli and confers a death-sparing effect to certain hematopoietic cell lines following growth factor withdrawal (3,5).Bcl-2 appears to function in several subcellular locations yet lacks any known motifs that would confer insight into its mechanism of action (6,7).A more recently identified protein,designated Bax p21(i.e., Bcl-associated X protein),has extensive amino acid homology with Bcl-2 and both homodimerizes and forms heterodimers with Bcl-2(8). Overexpression of Bax accelerates apoptotic death induced by cytokine deprivation in an IL-3 dependent cell line and Bax also counters the death repressor activity of Bcl-2(8).</p>	<p>Isotype: IgG</p> <p>SWISS: P10415</p>	<p>Applications: IHC-P (1:100-500) IHC-F (1:100-500) IF (1:100-500) Flow-Cyt (1µg/Test)</p> <p>Reactivity: Human, Rat (predicted: Mouse)</p> <p>Predicted MW.: 26 kDa</p> <p>Subcellular Location: Cell membrane ,Cytoplasm ,Nucleus</p>
--	--	--

— VALIDATION IMAGES —



Paraformaldehyde-fixed, paraffin embedded (rat bladder tissue); Antigen retrieval by boiling in sodium citrate buffer (pH6.0) for 15min; Block endogenous peroxidase by 3% hydrogen peroxide for 20 minutes; Blocking buffer (normal goat serum) at 37°C for 30min; Antibody incubation with (Bcl-2) Polyclonal Antibody, Unconjugated (bs-20352R) at 1:400 overnight at 4°C, followed by a conjugated secondary (sp-0023) for 20 minutes and DAB staining.



Blank control(blue):K562 (fixed with 2% paraformaldehyde for 10 min at 37°C). Primary Antibody:Rabbit Anti-Bcl-2 antibody (bs-20352R,Green); Dilution: 1µg in 100 µL 1X PBS containing 0.5% BSA; Isotype Control Antibody: Rabbit IgG(orange),used under the same conditions; Secondary Antibody: Goat anti-rabbit IgG-FITC(white blue), Dilution: 1:200 in 1 X PBS containing 0.5% BSA.

— SELECTED CITATIONS —

- **[IF=3.03]** Zhou et al. Effects of Zearalenone Exposure on the TGF-β1/Smad3 Signaling Pathway and the Expression of Proliferation or Apoptosis Related Genes of Post-Weaning Gilts. (2018) Toxins.(Basel). 10 IHC,WB ;Porcine. 29360780
- **[IF=2.629]** Song Zhenyan. et al. Neuroprotective Effect of Danggui Shaoyao San via the Mitophagy-Apoptosis Pathway in a Rat Model of Alzheimer' s Disease. Evid-Based Compl Alt. 2021;2021:3995958 WB ;Rat. 34621321

Important Note: This product as supplied is intended for research use only, not for use in human, therapeutic or diagnostic applications.