

bs-13267R**[Primary Antibody]****GALK2 Rabbit pAb****BioSS**
ANTIBODIES

www.bioss.com.cn

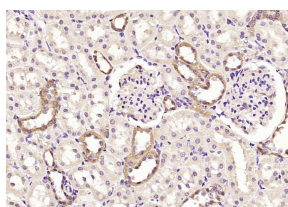
sales@bioss.com.cn

techsupport@bioss.com.cn

400-901-9800

— DATASHEET —

Host: Rabbit	Isotype: IgG	Applications: IHC-P (1:100-500) IHC-F (1:100-500) IF (1:100-500) Reactivity: Rat (predicted: Human, Mouse, Rabbit, Pig, Sheep, Cow, Dog) Predicted MW.: 50 kDa Subcellular Location: Cytoplasm
Clonality: Polyclonal		
GeneID: 2585	SWISS: Q01415	
Target: GALK2		
Immunogen: KLH conjugated synthetic peptide derived from human GALK2/Galactokinase 2: 141-240/458.		
Purification: affinity purified by Protein A		
Concentration: 1mg/ml		
Storage: 0.01M TBS (pH7.4) with 1% BSA, 0.02% Proclin300 and 50% Glycerol. Shipped at 4°C. Store at -20°C for one year. Avoid repeated freeze/thaw cycles.		
Background: GALK2 is important in the first step of the galactose metabolism pathway. GALK1, which belongs to the GHMP kinase family of proteins, is a crucial enzyme for galactose metabolism, specifically converting β -D-galactose to galactose 1-phosphate. Defects in the gene encoding GALK1 can cause galactosemia II, an autosomal recessive disorder characterized by congenital cataracts during infancy, often within the first two weeks of life. In the adult population, galactosemia II can cause presenile cataracts that are secondary to accumulation of galactitol in the lens of the eye. A second gene, GALK2, encodes an enzyme with greater activity against GalNAc than galactose. GALK2 has been implicated in the salvage pathway for the reutilization of free GalNAc derived from the degradation of complex carbohydrates.		

— VALIDATION IMAGES —

Paraformaldehyde-fixed, paraffin embedded (rat kidney); Antigen retrieval by boiling in sodium citrate buffer (pH6.0) for 15min; Block endogenous peroxidase by 3% hydrogen peroxide for 20 minutes; Blocking buffer (normal goat serum) at 37°C for 30min; Antibody incubation with (GALK2) Polyclonal Antibody, Unconjugated (bs-13267R) at 1:200 overnight at 4°C, followed by operating according to SP Kit(Rabbit) (sp-0023) instructions and DAB staining.