

bs-21460R**[Primary Antibody]****CD47 Rabbit pAb****BioSS**
ANTIBODIES

www.bioss.com.cn

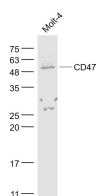
sales@bioss.com.cn

techsupport@bioss.com.cn

400-901-9800

— DATASHEET —

Host: Rabbit	Isotype: IgG	Applications: WB (1:500-2000)
Clonality: Polyclonal		Reactivity: Human
GeneID: 961	SWISS: Q08722	
Target: CD47		
Immunogen: KLH conjugated synthetic peptide derived from human CD47: 19-119/323. < Extracellular >		Predicted MW.: 33 kDa
Purification: affinity purified by Protein A		Subcellular Location: Cell membrane
Concentration: 1mg/ml		
Storage: 0.01M TBS (pH7.4) with 1% BSA, 0.02% Proclin300 and 50% Glycerol. Shipped at 4°C. Store at -20°C for one year. Avoid repeated freeze/thaw cycles.		
Background: This gene encodes a membrane protein, which is involved in the increase in intracellular calcium concentration that occurs upon cell adhesion to extracellular matrix. The encoded protein is also a receptor for the C-terminal cell binding domain of thrombospondin, and it may play a role in membrane transport and signal transduction. This gene has broad tissue distribution, and is reduced in expression on Rh erythrocytes. Alternatively spliced transcript variants have been found for this gene. [provided by RefSeq, Jul 2010]		

— VALIDATION IMAGES —

Sample: MOLT-4(Human) Cell Lysate at 30 ug
Primary: Anti- CD47 (bs-21460R) at 1/1000
dilution Secondary: IRDye800CW Goat Anti-
Rabbit IgG at 1/20000 dilution Predicted band
size: 33 kD Observed band size: 50 kD

— SELECTED CITATIONS —

- **[IF=10.317]** Wang K et al. An exosome-like programmable-bioactivating paclitaxel prodrug nanoplatfrom for enhanced breast cancer metastasis inhibition. Biomaterials. 2020 Oct;257:120224. WB ;human. 32736255
- **[IF=8.593]** Xin Shiyong. et al. ScRNA-seq revealed an immunosuppression state and tumor microenvironment heterogeneity related to lymph node metastasis in prostate cancer. EXP HEMATOL ONCOL. 2023 Dec;12(1):1-21 WB,IF,ICC ;Human. 37221625
- **[IF=5.3]** Paldino Emanuela. et al. Neuroimmune pathways involvement in neurodegeneration of R6/2 mouse model of Huntington' s disease. FRONT CELL NEUROSCI. 2024 Feb;18: IHC ;Mouse. 38444595
- **[IF=2.6]** Wijerathne Sandani V. T.. et al. Feline coronavirus influences the biogenesis and composition of extracellular vesicles derived from CRFK cells. FRONT VET SCI. 2024 Jul;11: Dot Blot ;Cat. 39091390