

**bs-21459R**

**[ Primary Antibody ]**

**Bioss**  
ANTIBODIES

www.bioss.com.cn

sales@bioss.com.cn

techsupport@bioss.com.cn

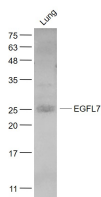
400-901-9800

## EGFL7 Rabbit pAb

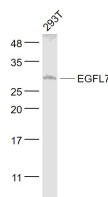
### — DATASHEET —

<b>Host:</b> Rabbit	<b>Isotype:</b> IgG	<b>Applications:</b> WB (1:500-2000)
<b>Clonality:</b> Polyclonal		
<b>GeneID:</b> 353156		<b>Reactivity:</b> Human, Mouse (predicted: Rat, Dog)
<b>Target:</b> EGFL7		
<b>Purification:</b> affinity purified by Protein A		
<b>Concentration:</b> 1mg/ml		<b>Predicted MW.:</b> 28 kDa
<b>Storage:</b> 0.01M TBS (pH7.4) with 1% BSA, 0.02% Proclin300 and 50% Glycerol. Shipped at 4°C. Store at -20°C for one year. Avoid repeated freeze/thaw cycles.		<b>Subcellular Location:</b> Secreted
<b>Background:</b> EGFL7 (EGF-like domain-containing protein 7) regulates vascular tubulogenesis in vivo. During sprouting angiogenesis, groups of endothelial cells (ECs) migrate together in units called sprouts. EGFL7 regulates the proper spatial organization of ECs within each sprout and influences their collective movement. It inhibits platelet-derived growth factor (PDGF)-BB-induced smooth muscle cell migration and promotes endothelial cells adhesion to the substrate in vitro.		

### — VALIDATION IMAGES —



Sample: Lung (Mouse) Lysate at 40 ug Primary:  
Anti- EGFL7 (bs-21459R) at 1/1000 dilution  
Secondary: IRDye800CW Goat Anti-Rabbit IgG at  
1/20000 dilution Predicted band size: 28 kD  
Observed band size: 25 kD



Sample: 293T(Human) Cell Lysate at 30 ug  
Primary: Anti- EGFL7 (bs-21459R) at 1/1000  
dilution Secondary: IRDye800CW Goat Anti-  
Rabbit IgG at 1/20000 dilution Predicted band  
size: 28 kD Observed band size: 28 kD