

bs-12313R**[Primary Antibody]****PHEX Rabbit pAb****Bioss**
ANTIBODIES

www.bioss.com.cn

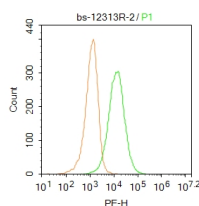
sales@bioss.com.cn

techsupport@bioss.com.cn

400-901-9800

DATASHEET

Host: Rabbit	Isotype: IgG	Applications: Flow-Cyt (1ug/Test)
Clonality: Polyclonal		
GeneID: 5251	SWISS: P78562	
Target: PHEX		
Immunogen: KLH conjugated synthetic peptide derived from Human PHEX: 201-300/749.		
Purification: affinity purified by Protein A		Reactivity: Human (predicted: Mouse, Rat, Rabbit, Pig, Sheep, Cow, Dog, Horse)
Concentration: 1mg/ml		
Storage: 0.01M TBS (pH7.4) with 1% BSA, 0.02% Proclin300 and 50% Glycerol. Shipped at 4°C. Store at -20°C for one year. Avoid repeated freeze/thaw cycles.		
Background: The PHEX a 749 amino acid protein that putatively consists of an intracellular, transmembrane and extracellular domain. PHEX mutations have been observed in 60-80% of hypophosphatemic rickets patients. The PHEX protein, which is a single-pass membrane protein, is also designated HYP, X-linked hypophosphatemia protein or metalloendopeptidase homolog PEX. PHEX plays an active role in bone and dentin mineralization and renal phosphate re-absorption. X-linked hypophosphatemic rickets, also designated HYP, is an X-linked dominant disorder characterized by impaired phosphate uptake in the kidney, which is likely to be caused by abnormal regulation of sodium phosphate cotransport in the proximal tubules. Clinical manifestations include skeletal deformities, growth failure, craniosynostosis, paravertebral calcifications, pseudofractures in lower extremities, and muscular hypotonia with onset in early childhood.		
		Predicted MW.: 86 kDa
		Subcellular Location: Cell membrane

VALIDATION IMAGES

Blank control: A549. Primary Antibody (green line): Rabbit Anti-PHEX antibody (bs-12313R)
Dilution: 1µg /10⁶ cells; Isotype Control Antibody (orange line): Rabbit IgG . Secondary Antibody : Goat anti-rabbit IgG-PE Dilution: 1µg /test. Protocol The cells were incubated in 5%BSA to block non-specific protein-protein interactions for 30 min at room temperature .Cells stained with Primary Antibody for 30 min at room temperature. The secondary antibody used for 40 min at room temperature. Acquisition of 20,000 events was performed.