

bs-8445R**[Primary Antibody]****phospho-Cdc25B (Ser149) Rabbit pAb****BioSS**
ANTIBODIES

www.bioss.com.cn

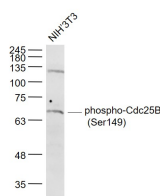
sales@bioss.com.cn

techsupport@bioss.com.cn

400-901-9800

— DATASHEET —

Host: Rabbit	Isotype: IgG	Applications: WB (1:500-2000)
Clonality: Polyclonal		
GeneID: 994	SWISS: P30305	
Target: phospho-Cdc25B (Ser149)		
Immunogen: KLH conjugated synthesised phosphopeptide derived from human Cdc25B around the phosphorylation site of Ser149: FR(p-S)LP.		
Purification: affinity purified by Protein A		Reactivity: Mouse (predicted: Human, Rat)
Concentration: 1mg/ml		Predicted MW.: 65 kDa
Storage: 0.01M TBS (pH7.4) with 1% BSA, 0.02% Proclin300 and 50% Glycerol. Shipped at 4°C. Store at -20°C for one year. Avoid repeated freeze/thaw cycles.		Subcellular Location: Cytoplasm
Background: CDC25B is a member of the CDC25 family of phosphatases. CDC25B activates the cyclin dependent kinase CDC2 by removing two phosphate groups and it is required for entry into mitosis. CDC25B shuttles between the nucleus and the cytoplasm due to nuclear localization and nuclear export signals. The protein is nuclear in the M and G1 phases of the cell cycle and moves to the cytoplasm during S and G2. CDC25B has oncogenic properties, although its role in tumor formation has not been determined. Multiple transcript variants for this gene exist. [provided by RefSeq, Jul 2008].		

— VALIDATION IMAGES —

Sample: NIH/3T3(Mouse) Cell Lysate at 30 ug
Primary: Anti- phospho-Cdc25B (Ser149)
(bs-8445R) at 1/1000 dilution Secondary:
IRDye800CW Goat Anti-Rabbit IgG at 1/20000
dilution Predicted band size: 65 kD Observed
band size: 67 kD