

bs-2830R**[Primary Antibody]****TRAF6 Rabbit pAb****BioSS**
ANTIBODIES

www.bioss.com.cn

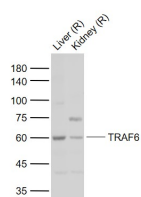
sales@bioss.com.cn

techsupport@bioss.com.cn

400-901-9800

— DATASHEET —

Host: Rabbit Clonality: Polyclonal GeneID: 7189 Target: TRAF6 Immunogen: KLH conjugated synthetic peptide derived from human TRAF6: 411-510/522. Purification: affinity purified by Protein A Concentration: 1mg/ml Storage: 0.01M TBS (pH7.4) with 1% BSA, 0.02% Proclin300 and 50% Glycerol. Shipped at 4°C. Store at -20°C for one year. Avoid repeated freeze/thaw cycles. Background: The protein encoded by this gene is a member of the TNF receptor associated factor (TRAF) protein family. TRAF proteins are associated with, and mediate signal transduction from members of the TNF receptor superfamily. This protein mediates the signaling not only from the members of the TNF receptor superfamily, but also from the members of the Toll/IL-1 family. Signals from receptors such as CD40, TNFSF11/RANCE and IL-1 have been shown to be mediated by this protein. This protein also interacts with various protein kinases including IRAK1/IRAK, SRC and PKCzeta, which provides a link between distinct signaling pathways. This protein functions as a signal transducer in the NF-kappaB pathway that activates IkappaB kinase (IKK) in response to proinflammatory cytokines. The interaction of this protein with UBE2N/UBC13, and UBE2V1/UEV1A, which are ubiquitin conjugating enzymes catalyzing the formation of polyubiquitin chains, has been found to be required for IKK activation by this protein. Two alternatively spliced transcript variants encoding identical proteins have been reported. [provided by RefSeq].	Isotype: IgG SWISS: Q9Y4K3 Applications: WB (1:500-2000) Reactivity: Rat (predicted: Human, Mouse, Rabbit, Pig, Sheep, Cow, Horse) Predicted MW.: 60 kDa Subcellular Location: Nucleus
---	---

— VALIDATION IMAGES —

Sample: Lane 1: Rat Liver tissue lysates Lane 2:
Rat Kidney tissue lysates Primary: Anti-TRAF6
(bs-2830R) at 1/1000 dilution Secondary:
IRDye800CW Goat Anti-Rabbit IgG at 1/20000
dilution Predicted band size: 60 kD Observed
band size: 60 kD

— SELECTED CITATIONS —

- **[IF=16.988]** Wu Yutong. et al. Osteoclast-Derived Apoptotic Bodies Inhibit Naive Cd8 T Cell Activation via Siglec15 Promoting Breast Cancer Secondary Metastasis. Cell Reports Medicine. 2022 Nov 03 WB,IHC ;Mouse. 37607544
- **[IF=8.5]** Lei Zhao. et al. The major roles of intestinal microbiota and TRAF6/NF-κB signaling pathway in acute intestinal

Important Note: This product as supplied is intended for research use only, not for use in human, therapeutic or diagnostic applications.

- inflammation in mice, and the improvement effect by Hippophae rhamnoides polysaccharide. INT J BIOL MACROMOL. 2025 Jan;;139710 WB ;Mouse. 39793780
- **[IF=5.895]** Xue-Yan Dai. et al. Role of Toll-like Receptor/MyD88 Signaling in Lycopene Alleviated Di-2-ethylhexyl Phthalate (DEHP)-Induced Inflammatory Response. J AGR FOOD CHEM. 2022;XXXX(XXX):XXX-XXX WB ;Mouse. 35917506
 - **[IF=5.818]** Xueyang Chen. et al. A20 Enhances the Expression of the Proto-Oncogene C-Myc by Downregulating TRAF6 Ubiquitination after ALV-A Infection. VIRUSES-BASEL. 2022 Oct;14(10):2210 CoIP,WB ;Other. 36298765
 - **[IF=5.156]** Li, Muzhe. et al. Effects of adenovirus-mediated knockdown of IRAK4 on synovitis in the osteoarthritis rabbit model. Arthritis Res Ther. 2021 Dec;23(1):1-12 WB ;Rabbits. 34863246