

bs-11087R**[Primary Antibody]****LRFN2 Rabbit pAb****BioSS**
ANTIBODIES

www.bioss.com.cn

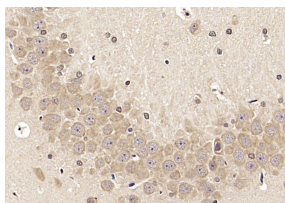
sales@bioss.com.cn

techsupport@bioss.com.cn

400-901-9800

— DATASHEET —

Host: Rabbit	Isotype: IgG	Applications: IHC-P (1:100-500) IHC-F (1:100-500) IF (1:100-500) Reactivity: Rat (predicted: Human, Mouse, Rabbit, Pig, Sheep, Cow, Chicken, Dog, Horse) Predicted MW.: 83 kDa Subcellular Location: Cell membrane
Clonality: Polyclonal		
GeneID: 57497	SWISS: Q9ULH4	
Target: LRFN2		
Immunogen: KLH conjugated synthetic peptide derived from human LRFN2/SALM1: 401-500/789.		
Purification: affinity purified by Protein A		
Concentration: 1mg/ml		
Storage: 0.01M TBS (pH7.4) with 1% BSA, 0.02% Proclin300 and 50% Glycerol. Shipped at 4°C. Store at -20°C for one year. Avoid repeated freeze/thaw cycles.		
Background: LRFN2 is a 789 amino acid single-pass type I membrane protein belonging to the LRFN family. Encoded by a gene that maps to human chromosome 6p21.2, LRFN2 is moderately expressed in brain, spleen and testis. LRFN2 contains one fibronectin type-III domain, one Ig-like (immunoglobulin-like) domain and six LRR (leucine-rich) repeats. LRFN2 promotes neurite outgrowth in hippocampal neurons, enhances cell surface expression of two NMDA receptor subunits, NMDAR1 and NMDAR2B, and may play a role in redistributing PSD-95 to cell periphery. LRFN2 forms heteromeric complexes with LRFN1, LRFN3, LRFN4 and LRFN5, and is capable of forming homomeric complexes, but not across cell junctions.		

— VALIDATION IMAGES —

Paraformaldehyde-fixed, paraffin embedded (rat brain); Antigen retrieval by microwave in sodium citrate buffer (pH6.0) ; Block endogenous peroxidase by 3% hydrogen peroxide for 30 minutes; Blocking buffer (3% BSA) at RT for 30min; Antibody incubation with (LRFN2) Polyclonal Antibody, Unconjugated (bs-11087R) at 1:400 overnight at 4°C, followed by conjugation to the secondary antibody (labeled with HRP) and DAB staining.