

bs-8588R**[Primary Antibody]****BioSS**
ANTIBODIES

www.bioss.com.cn

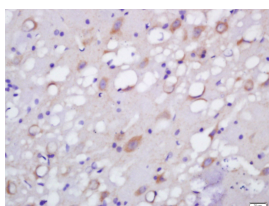
sales@bioss.com.cn

techsupport@bioss.com.cn

400-901-9800

NETO1 Rabbit pAb**— DATASHEET —**

Host: Rabbit	Isotype: IgG	Applications: IHC-P (1:100-500) IHC-F (1:100-500) IF (1:100-500)
Clonality: Polyclonal		
GeneID: 81832		
Target: NETO1		Reactivity: Rat (predicted: Human, Mouse, Rabbit, Pig, Cow, Chicken)
Immunogen: KLH conjugated synthetic peptide derived from human NETO1: 201-300/533. < Extracellular >		
Purification: affinity purified by Protein A		Predicted MW.: 56 kDa
Concentration: 1mg/ml		Subcellular Location: Secreted ,Cell membrane
Storage: 0.01M TBS (pH7.4) with 1% BSA, 0.02% Proclin300 and 50% Glycerol. Shipped at 4°C. Store at -20°C for one year. Avoid repeated freeze/thaw cycles.		
Background: NETO1 is a 533 amino acid protein that contains one LDL-receptor class A domain and two CUB domains and is either membrane-bound or secreted. Expressed as three alternatively spliced isoforms, the first two of which are retina-specific and the third of which is found in both retina and brain tissue, NETO1 is thought to be involved in the development and maintenance of neuronal circuitry, possibly playing a role in proper brain function. Human NETO1 shares 95% amino acid identity with its mouse counterpart, suggesting a conserved role between species. The gene encoding NETO1 maps to human chromosome 18, which houses over 300 protein-coding genes and contains nearly 76 million bases. There are a variety of diseases associated with defects in chromosome 18-localized genes, some of which include Trisomy 18 (also known as Edwards syndrome), Niemann-Pick disease, hereditary hemorrhagic telangiectasia, erythropoietic protoporphyria and follicular lymphomas.		

— VALIDATION IMAGES —

Tissue/cell: rat brain tissue; 4% Paraformaldehyde-fixed and paraffin-embedded; Antigen retrieval: citrate buffer (0.01M, pH 6.0), Boiling bathing for 15min; Block endogenous peroxidase by 3% Hydrogen peroxide for 30min; Blocking buffer (normal goat serum,C-0005) at 37°C for 20 min; Incubation: Anti-NETO1 Polyclonal Antibody, Unconjugated(bs-8588R) 1:200, overnight at 4°C, followed by conjugation to the secondary antibody(SP-0023) and DAB(C-0010) staining