

**bs-1993R****[ Primary Antibody ]****MUC2 Rabbit pAb****Bioss**  
ANTIBODIES

www.bioss.com.cn

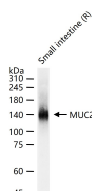
sales@bioss.com.cn

techsupport@bioss.com.cn

400-901-9800

**— DATASHEET —**

<b>Host:</b> Rabbit	<b>Isotype:</b> IgG	<b>Applications:</b> WB (1:500-2000)
<b>Clonality:</b> Polyclonal		<b>Reactivity:</b> Rat
<b>GeneID:</b> 4583	<b>SWISS:</b> Q02817	
<b>Target:</b> MUC2		
<b>Immunogen:</b> KLH conjugated synthetic peptide derived from human Muc2: 4901-5179/5179.		<b>Predicted MW.:</b> 570 kDa
<b>Purification:</b> affinity purified by Protein A		<b>Subcellular Location:</b> Secreted
<b>Concentration:</b> 1mg/ml		
<b>Storage:</b> 0.01M TBS (pH7.4) with 1% BSA, 0.02% Proclin300 and 50% Glycerol. Shipped at 4°C. Store at -20°C for one year. Avoid repeated freeze/thaw cycles.		
<b>Background:</b> This gene encodes a member of the mucin protein family. Mucins are high molecular weight glycoproteins produced by many epithelial tissues. The protein encoded by this gene is secreted and forms an insoluble mucous barrier that protects the gut lumen. The protein polymerizes into a gel of which 80% is composed of oligosaccharide side chains by weight. The protein features a central domain containing tandem repeats rich in threonine and proline that varies between 50 and 115 copies in different individuals. Alternatively spliced transcript variants of this gene have been described, but their full-length nature is not known. [provided by RefSeq, Jul 2008]		

**— VALIDATION IMAGES —**

25 ug total protein per lane of various lysates (see on figure) probed with MUC2 polyclonal antibody, unconjugated (bs-1993R) at 1:1000 dilution and 4°C overnight incubation. Followed by conjugated secondary antibody incubation at r.t. for 60 min.