

bs-1990R**[Primary Antibody]****MITF Rabbit pAb****BioSS**
ANTIBODIES

www.bioss.com.cn

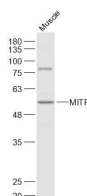
sales@bioss.com.cn

techsupport@bioss.com.cn

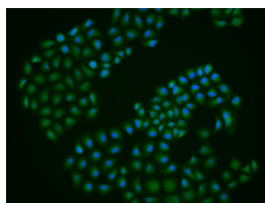
400-901-9800

— DATASHEET —

Host: Rabbit Clonality: Polyclonal GeneID: 4286 Target: MITF Immunogen: KLH conjugated synthetic peptide derived from human MITF: 351-450/526. Purification: affinity purified by Protein A Concentration: 1mg/ml Storage: 0.01M TBS (pH7.4) with 1% BSA, 0.02% Proclin300 and 50% Glycerol. Shipped at 4°C. Store at -20°C for one year. Avoid repeated freeze/thaw cycles. Background: The protein encoded by this gene is a transcription factor that contains both basic helix-loop-helix and leucine zipper structural features. The encoded protein regulates melanocyte development and is responsible for pigment cell-specific transcription of the melanogenesis enzyme genes. Heterozygous mutations in the this gene cause auditory-pigmentary syndromes, such as Waardenburg syndrome type 2 and Tietz syndrome. [provided by RefSeq, Aug 2017]	Isotype: IgG SWISS: O75030	Applications: WB (1:500-2000) ICC/IF (1:50-200) Reactivity: Human, Mouse (predicted: Rat, Rabbit, Cow, Chicken, Dog, Horse) Predicted MW.: 59 kDa Subcellular Location: Nucleus
--	---	--

— VALIDATION IMAGES —

Sample: Muscle (Mouse) Lysate at 40 ug Primary:
Anti-MITF (bs-1990R) at 1/1000 dilution
Secondary: IRDye800CW Goat Anti-Rabbit IgG at
1/20000 dilution Predicted band size: 59 kD
Observed band size: 57 kD



Hela cell; 4% Paraformaldehyde-fixed; Triton X-100 at room temperature for 20 min; Blocking buffer (normal goat serum, C-0005) at 37°C for 20 min; Antibody incubation with (MITF) polyclonal Antibody, Unconjugated (bs-1990R) 1:25, 90 minutes at 37°C; followed by a conjugated Goat Anti-Rabbit IgG antibody at 37°C for 90 minutes, DAPI (blue, C02-04002) was used to stain the cell nuclei.

— SELECTED CITATIONS —

- **[IF=45.5]** Yash Chhabra. et al. Sex-dependent effects in the aged melanoma tumor microenvironment influence invasion and resistance to targeted therapy. CELL. 2024 Oct;187:6016-6034.e25 IHC ;Mouse,Human. 39243764
- **[IF=14.976]** Qinyu Ma. et al. Small extracellular vesicles deliver osteolytic effectors and mediate cancer - induced osteolysis in bone metastatic niche. J Extracell Vesicles. 2021 Feb;10(4):e12068 WB ;Mouse. 33659051
- **[IF=6.6]** Yang Zhang. et al. Icariin-Enhanced Osteoclast-Derived Exosomes Promote Repair of Infected Bone Defects by Regulating Osteoclast and Osteoblast Communication. INT J NANOMED. 2024 Nov 21 WB ;Mouse. 39588260

Important Note: This product as supplied is intended for research use only, not for use in human, therapeutic or diagnostic applications.

- **[IF=4.21]** Kito, Yusuke, Chiemi Saigo, and Tamotsu Takeuchi. "Novel Transgenic Mouse Model of Polycystic Kidney Disease." *The American Journal of Pathology* (2017). WB ;="Mouse". 28666097
- **[IF=4.26]** Rice et al. Melanoblast development coincides with the late emerging cells from the dorsal neural tube in turtle *Trachemys scripta*. (2017) *Sci.Rep.* 7:12063 IHC ;Turtle. 28935865