

bs-14535R**[Primary Antibody]****eIF2B1 Rabbit pAb****Bioss**
ANTIBODIES

www.bioss.com.cn

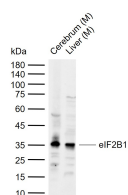
sales@bioss.com.cn

techsupport@bioss.com.cn

400-901-9800

— DATASHEET —

Host: Rabbit	Isotype: IgG	Applications: WB (1:500-2000)
Clonality: Polyclonal		Reactivity: Mouse (predicted: Human, Rat, Rabbit, Pig, Sheep, Cow, Chicken, Dog, Horse)
GeneID: 1967	SWISS: Q14232	
Target: eIF2B1		Predicted MW.: 34 kDa
Immunogen: KLH conjugated synthetic peptide derived from human eIF2B1: 51-150/305.		Subcellular Location: Cytoplasm
Purification: affinity purified by Protein A		
Concentration: 1mg/ml		
Storage: 0.01M TBS (pH7.4) with 1% BSA, 0.02% Proclin300 and 50% Glycerol. Shipped at 4°C. Store at -20°C for one year. Avoid repeated freeze/thaw cycles.		
Background: This gene encodes one of five subunits of eukaryotic translation initiation factor 2B (EIF2B), a GTP exchange factor for eukaryotic initiation factor 2 and an essential regulator for protein synthesis. Mutations in this gene and the genes encoding other EIF2B subunits have been associated with leukoencephalopathy with vanishing white matter. [provided by RefSeq, Oct 2009]		

— VALIDATION IMAGES —

Sample: Lane 1: Mouse Cerebrum tissue lysates

Lane 2: Mouse Liver tissue lysates Primary: Anti-eIF2B1 (bs-14535R) at 1/1000 dilution

Secondary: IRDye800CW Goat Anti-Rabbit IgG at 1/20000 dilution Predicted band size: 34 kDa

Observed band size: 35 kDa