

bs-16302R**[Primary Antibody]****GPT2 Rabbit pAb****Bioss**
ANTIBODIES

www.bioss.com.cn

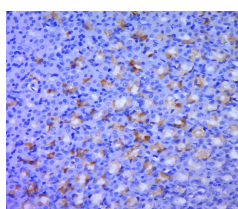
sales@bioss.com.cn

techsupport@bioss.com.cn

400-901-9800

— DATASHEET —

Host: Rabbit	Isotype: IgG	Applications: IHC-P (1:100-500) IHC-F (1:100-500) IF (1:100-500) Reactivity: Rat (predicted: Human, Mouse, Pig, Sheep, Cow, Dog, Horse) Predicted MW.: 58 kDa Subcellular Location: Cytoplasm
Clonality: Polyclonal		
GeneID: 84706	SWISS: Q8TD30	
Target: GPT2		
Immunogen: KLH conjugated synthetic peptide derived from human GPT2: 101-200/523.		
Purification: affinity purified by Protein A		
Concentration: 1mg/ml		
Storage: 0.01M TBS (pH7.4) with 1% BSA, 0.02% Proclin300 and 50% Glycerol. Shipped at 4°C. Store at -20°C for one year. Avoid repeated freeze/thaw cycles.		
Background: This gene encodes one of the two pyridoxal enzymes which catalyze a reversible transamination reaction to yield glutamate and pyruvate so these enzymes participate in amino acid metabolism and gluconeogenesis. Multiple transcript variants encoding different isoforms have been found for this gene. [provided by RefSeq, Dec 2011]		

— VALIDATION IMAGES —

Paraformaldehyde-fixed, paraffin embedded (rat stomach tissue); Antigen retrieval by boiling in sodium citrate buffer (pH6.0) for 15min; Block endogenous peroxidase by 3% hydrogen peroxide for 20 minutes; Blocking buffer (normal goat serum) at 37°C for 30min; Antibody incubation with (GPT2) Polyclonal Antibody, Unconjugated (bs-16302R) at 1:400 overnight at 4°C, followed by a conjugated secondary (sp-0023) for 20 minutes and DAB staining.