

## GPR61 Rabbit pAb

Catalog Number: bs-16295R

Target Protein: GPR61

Concentration: 1mg/ml

Form: Liquid

Host: Rabbit

Clonality: Polyclonal

Isotype: IgG

Applications: WB (1:500-2000)

Reactivity: Mouse (predicted:Human, Rat, Rabbit, Sheep, Cow, Dog)

Predicted MW: 49 kDa

Subcellular Cell membrane

Locations:

Entrez Gene: 83873

Swiss Prot: Q9BZJ8

Source: KLH conjugated synthetic peptide derived from human GPR61: 1-100/451.

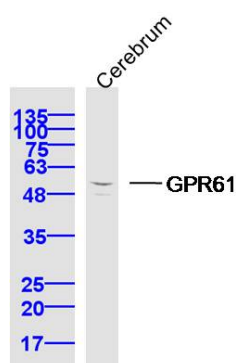
Purification: affinity purified by Protein A

Storage: 0.01M TBS (pH7.4) with 1% BSA, 0.02% Proclin300 and 50% Glycerol.

Shipped at 4°C. Store at -20°C for one year. Avoid repeated freeze/thaw cycles.

**Background:** This gene belongs to the G-protein coupled receptor 1 family. G protein-coupled receptors contain 7 transmembrane domains and transduce extracellular signals through heterotrimeric G proteins. The protein encoded by this gene is most closely related to biogenic amine receptors. [provided by RefSeq, Jul 2008]

### VALIDATION IMAGES



Sample: Cerebrum (Mouse) Lysate at 40 ug Primary: Anti-GPR61 (bs-16295R) at 1/300 dilution Secondary: IRDye800CW Goat Anti-Rabbit IgG at 1/20000 dilution Predicted band size: 49 kD Observed band size: 50 kD