

bs-19059R**[Primary Antibody]****Bioss**
ANTIBODIES

www.bioss.com.cn

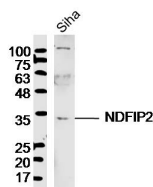
sales@bioss.com.cn

techsupport@bioss.com.cn

400-901-9800

NDFIP2 Rabbit pAb**— DATASHEET —**

Host: Rabbit Clonality: Polyclonal GeneID: 54602 Target: NDFIP2 Immunogen: KLH conjugated synthetic peptide derived from human NDFIP2: 261-336/336. < Extracellular > Purification: affinity purified by Protein A Concentration: 1mg/ml Storage: 0.01M TBS (pH7.4) with 1% BSA, 0.02% Proclin300 and 50% Glycerol. Shipped at 4°C. Store at -20°C for one year. Avoid repeated freeze/thaw cycles. Background: NDFIP2 is a 336 amino acid protein that localizes to the membrane of both the endosome and the golgi apparatus. Expressed in kidney, heart, brain, lung, liver, placenta and skeletal muscle, Ndfip2 interacts with NEDD4 and NEDD4-L and is thought to be involved in endocytosis and in the NF x B and MAPK signaling pathways. Additionally, Ndfip2 may function as an adaptor protein that may recruit NEDD4 ubiquitin-protein ligases to protein trafficking machinery in the golgi. Ndfip2 is activated by T cells and may be ubiquitinated by NEDD4 or NEDD4-L, an event that does not affect Ndfip2 function. The gene encoding Ndfip2 maps to human chromosome 13, which houses over 400 genes, such as BRCA2 and RB1, and comprises nearly 4% of the human genome.	Isotype: IgG Applications: WB (1:500-2000) Reactivity: Human (predicted: Mouse, Rat, Rabbit, Pig, Sheep, Cow, Chicken, Dog, Horse) Predicted MW.: 36 kDa Subcellular Location: Cell membrane ,Cytoplasm
--	--

— VALIDATION IMAGES —

Sample: SiHa Cell (Human) Lysate at 40 ug
Primary: Anti- NDFIP2 (bs-19059R) at 1/300
dilution Secondary: IRDye800CW Goat Anti-
Rabbit IgG at 1/20000 dilution Predicted band
size: 36 kD Observed band size: 34 kD

— SELECTED CITATIONS —

- **[IF=5.722]** Zhou, Yongqiang. et al. Gly-TRF enhances LCSC-like properties and promotes HCC cells migration by targeting NDFIP2. Cancer Cell Int. 2021 Dec;21(1):1-16 WB,IF ;human. 34537070