

bs-19058R**[Primary Antibody]****NFIP1 Rabbit pAb****Bioss**
ANTIBODIES

www.bioss.com.cn

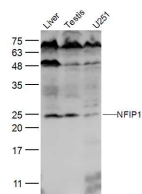
sales@bioss.com.cn

techsupport@bioss.com.cn

400-901-9800

— DATASHEET —

Host: Rabbit Clonality: Polyclonal GeneID: 80762 Target: NFIP1 Immunogen: KLH conjugated synthetic peptide derived from human NFIP1: 2-100/221. Purification: affinity purified by Protein A Concentration: 1mg/ml Storage: 0.01M TBS (pH7.4) with 1% BSA, 0.02% Proclin300 and 50% Glycerol. Shipped at 4°C. Store at -20°C for one year. Avoid repeated freeze/thaw cycles. Background: The protein encoded by this gene belongs to a small group of evolutionarily conserved proteins with three transmembrane domains. It is a potential target for ubiquitination by the Nedd4 family of proteins. This protein is thought to be part of a family of integral Golgi membrane proteins. [provided by RefSeq, Jul 2008]	Isotype: IgG SWISS: Q9BT67	Applications: WB (1:500-2000) Reactivity: Human, Mouse (predicted: Rat, Rabbit, Pig, Sheep, Cow, Chicken, Horse) Predicted MW.: 25 kDa Subcellular Location: Secreted
--	---	---

— VALIDATION IMAGES —

Sample: Liver (Mouse) Lysate at 40 ug Testis (Mouse) Lysate at 40 ug U251 (Human) Cell Lysate at 30 ug
 Primary: Anti-NFIP1 (bs-19058R) at 1/300 dilution
 Secondary: IRDye800CW Goat Anti-Rabbit IgG at 1/20000 dilution
 Predicted band size: 25 kD Observed band size: 25 kD

— SELECTED CITATIONS —

- **[IF=2.918]** Ji Z et al. chi-miR-143-3p Promotes Apoptosis of Mammary Gland Epithelial Cells from Dairy Goats by Targeting Ndfip1. DNA Cell Biol. 2019 Nov;38(11):1188-1196. WB ;goat. 31603699