

bs-2553R**[Primary Antibody]****CXCL13 Rabbit pAb****Bioss**
ANTIBODIES

www.bioss.com.cn

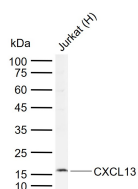
sales@bioss.com.cn

techsupport@bioss.com.cn

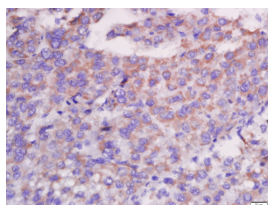
400-901-9800

DATASHEET**Host:** Rabbit**Isotype:** IgG**Clonality:** Polyclonal**GeneID:** 10563**SWISS:** Q43927**Target:** CXCL13**Immunogen:** KLH conjugated synthetic peptide derived from human CXCL13: 23-109/109.**Purification:** affinity purified by Protein A**Concentration:** 1mg/ml**Storage:** 0.01M TBS (pH7.4) with 1% BSA, 0.02% Proclin300 and 50% Glycerol.

Shipped at 4°C. Store at -20°C for one year. Avoid repeated freeze/thaw cycles.

Background: B lymphocyte chemoattractant, independently cloned and named Angie, is a CXC chemokine strongly expressed in the follicles of the spleen, lymph nodes, and Peyer's patches. It preferentially promotes the migration of B lymphocytes (compared to T cells and macrophages), apparently by stimulating calcium influx into, and chemotaxis of, cells expressing Burkitt's lymphoma receptor 1 (BLR1). It may therefore function in the homing of B lymphocytes to follicles.**Applications:** WB (1:500-2000)**IHC-P** (1:100-500)**IHC-F** (1:100-500)**IF** (1:100-500)**Flow-Cyt** (1ug/Test)**Reactivity:** Human (predicted: Dog)**Predicted MW.:** 10 kDa**Subcellular Location:** Secreted**VALIDATION IMAGES**

Sample: Lane 1: Human Jurkat cell lysates
 Primary: Anti-CXCL13 (bs-2553R) at 1/1000 dilution
 Secondary: IRDye800CW Goat Anti-Rabbit IgG at 1/20000 dilution
 Predicted band size: 10 kDa
 Observed band size: 16 kDa



Paraformaldehyde-fixed, paraffin embedded (human liver carcinoma); Antigen retrieval by boiling in sodium citrate buffer (pH6.0) for 15min; Block endogenous peroxidase by 3% hydrogen peroxide for 20 minutes; Blocking buffer (normal goat serum) at 37°C for 30min; Antibody incubation with (CXCL13) Polyclonal Antibody, Unconjugated (bs-2553R) at 1:400 overnight at 4°C, followed by a conjugated secondary (sp-0023) for 20 minutes and DAB staining.

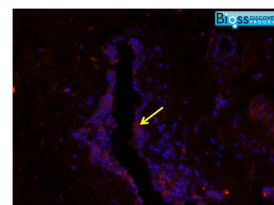
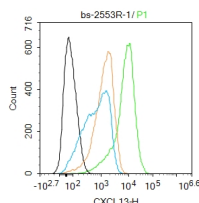


Image was kindly submitted by Erica Pimenta from UMDNJ. Human breast tumor tissue stained with Rabbit Anti-CXCL13 Polyclonal Antibody (bs-2553R)



Blank control (black line) :HepG2. Primary Antibody (green line): Rabbit Anti-CXCL13 antibody (bs-2553R) Dilution:1ug/Test; Secondary Antibody (white blue line) : Goat anti-rabbit IgG-AF488 Dilution: 0.5ug/Test. Isotype control (orange line) : Normal Rabbit

Important Note: This product as supplied is intended for research use only, not for use in human, therapeutic or diagnostic applications.

IgG Protocol The cells were fixed with 4% PFA (10min at room temperature) and then permeabilized with 90% ice-cold methanol for 20 min at -20°C. The cells were then incubated in 5% BSA to block non-specific protein-protein interactions for 30 min at room temperature. Cells stained with Primary Antibody for 30 min at room temperature. The secondary antibody used for 40 min at room temperature. Acquisition of 20,000 events was performed.

— SELECTED CITATIONS —

- **[IF=8.98]** Pei, Guangchang, et al. "Renal Interstitial Infiltration and Tertiary Lymphoid Organ Neogenesis in IgA Nephropathy." *Clinical Journal of the American Society of Nephrology* (2013): CJN-01150113. IHC ;="Human". 24262509
- **[IF=5.736]** Maria Chiara Trolese. et al. CXCL13/CXCR5 signalling is pivotal to preserve motor neurons in amyotrophic lateral sclerosis. *Ebiomedicine*. 2020 Dec;62:103097 IHC ;Human. 33161233
- **[IF=6.4]** Zhuo Lili. et al. Integrated immuno-transcriptomic analysis of ovarian cancer identifies a four-chemokine-dominated subtype with antitumor immune-active phenotype and favorable prognosis. *BRIT J CANCER*. 2024 Aug;;1-12 IHC ;Human. 39095528
- **[IF=4.8]** Ruoyun Dong. et al. Study on the mechanisms of defective spermatogenesis induced by TiO₂ NPs based on 3D blood—testis barrier microfluidic chip. *TOXICOLOGY*. 2024 Jul;;153888 WB ;Mouse. 39019315
- **[IF=4.21]** Pimenta, Erica Maria, et al. "IRF5 is a novel regulator of CXCL13 expression in breast cancer that regulates CXCR5+ B- and T-cell trafficking to tumor-conditioned media." *Immunology and Cell Biology* (2014). Other ;="Human". 25533286