

bs-11847R**[Primary Antibody]****GPM6B Rabbit pAb****Bioss**
ANTIBODIES

www.bioss.com.cn

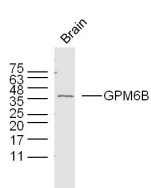
sales@bioss.com.cn

techsupport@bioss.com.cn

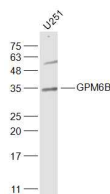
400-901-9800

— DATASHEET —

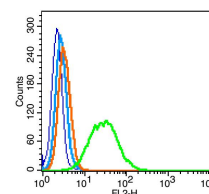
Host: Rabbit Clonality: Polyclonal GeneID: 2824 Target: GPM6B Immunogen: KLH conjugated synthetic peptide derived from human GPM6B: 1-100/265. Purification: affinity purified by Protein A Concentration: 1mg/ml Storage: 0.01M TBS (pH7.4) with 1% BSA, 0.02% Proclin300 and 50% Glycerol. Shipped at 4°C. Store at -20°C for one year. Avoid repeated freeze/thaw cycles. Background: GPM6B belongs to the myelin proteolipid protein family and is implicated in neural development. It is expressed in neurons and glia; cerebellar Bergmann glia, in glia within white matter tracts of the cerebellum and cerebrum, and in embryonic dorsal root ganglia.	Isotype: IgG SWISS: Q13491	Applications: WB (1:500-2000) Flow-Cyt (1µg/Test) Reactivity: Human, Mouse, Rat (predicted: Pig, Horse) Predicted MW.: 29 kDa Subcellular Location: Cell membrane ,Cytoplasm
--	---	---

— VALIDATION IMAGES —

Sample: Brain (Mouse) Lysate at 40 ug
Primary: Anti-GPM6B (bs-11847R) at 1/300 dilution
Secondary: IRDye800CW Goat Anti-Rabbit IgG at 1/20000 dilution
Predicted band size: 29 kD
Observed band size: 36 kD



Sample: U251 (Human) Cell Lysate at 30 ug
Primary: Anti-GPM6B (bs-11847R) at 1/1000 dilution
Secondary: IRDye800CW Goat Anti-Rabbit IgG at 1/20000 dilution
Predicted band size: 29 kD
Observed band size: 34 kD



Blank control: RSC96 (blue), the cells were fixed with 2% paraformaldehyde (10 min) and then permeabilized with ice-cold 90% methanol for 30 min on ice. Isotype Control Antibody: Rabbit IgG (orange); Secondary Antibody: Goat anti-rabbit IgG-PE (white blue), Dilution: 1:200 in 1 X PBS containing 0.5% BSA; Primary Antibody Dilution: 0.2 µg in 100 µL 1X PBS containing 0.5% BSA (green).