

bs-8260R**[Primary Antibody]****DHPS1 Rabbit pAb****BioSS**
ANTIBODIES

www.bioss.com.cn

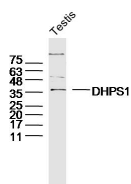
sales@bioss.com.cn

techsupport@bioss.com.cn

400-901-9800

— DATASHEET —

Host: Rabbit	Isotype: IgG	Applications: WB (1:500-2000)
Clonality: Polyclonal		Reactivity: Mouse (predicted: Human, Rat)
GeneID: 27071	SWISS: Q9UN19	
Target: DHPS1		Predicted MW.: 34 kDa
Immunogen: KLH conjugated synthetic peptide derived from human DHPS1: 1-100/313.		Subcellular Location: Cell membrane ,Cytoplasm
Purification: affinity purified by Protein A		
Concentration: 1mg/ml		
Storage: 0.01M TBS (pH7.4) with 1% BSA, 0.02% Proclin300 and 50% Glycerol. Shipped at 4°C. Store at -20°C for one year. Avoid repeated freeze/thaw cycles.		
Background: DHRS1 (dehydrogenase/reductase (SDR family) member 1), also known as SDR19C1, is a 313 amino acid protein that belongs to the short-chain dehydrogenases/reductases (SDR) family and likely functions as an oxidoreductase. Abundantly expressed in heart and liver, DHRS1 contains an SDR motif and is encoded by a gene that maps to human chromosome 14q12. Human chromosome 14 houses over 700 genes and comprises nearly 3.5% of the human genome. Chromosome 14 encodes the presenilin 1 (PSEN1) gene, which is one of the three key genes associated with the development of Alzheimer's disease (AD). The SERPINA1 gene is also located on chromosome 14 and, when defective, leads to the genetic disorder α -antitrypsin deficiency, which is characterized by severe lung complications and liver dysfunction.		

— VALIDATION IMAGES —

Sample: Testis (Mouse) Lysate at 40 ug Primary:

Anti-DHPS1 (bs-8260R) at 1/300 dilution

Secondary: IRDye800CW Goat Anti-Rabbit IgG at

1/20000 dilution Predicted band size: 34 kD

Observed band size: 36 kD