

**bs-13221R****[ Primary Antibody ]****FSD1L Rabbit pAb****Bioss**  
**ANTIBODIES**

www.bioss.com.cn

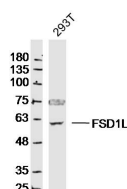
sales@bioss.com.cn

techsupport@bioss.com.cn

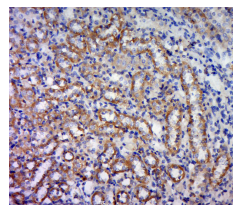
400-901-9800

**— DATASHEET —**

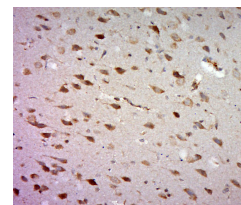
<b>Host:</b> Rabbit	<b>Isotype:</b> IgG	<b>Applications:</b> WB (1:500-2000) <b>IHC-P</b> (1:100-500) <b>IHC-F</b> (1:100-500) <b>IF</b> (1:100-500)  <b>Reactivity:</b> Human, Rat (predicted: Mouse, Rabbit, Pig, Sheep, Cow, Dog, Horse)  <b>Predicted MW.:</b> 60 kDa  <b>Subcellular Location:</b> Nucleus
<b>Clonality:</b> Polyclonal		
<b>GeneID:</b> 83856	<b>SWISS:</b> Q9BXM9	
<b>Target:</b> FSD1L		
<b>Immunogen:</b> KLH conjugated synthetic peptide derived from human FSD1L/CCDC10: 221-320/530.		
<b>Purification:</b> affinity purified by Protein A		
<b>Concentration:</b> 1mg/ml		
<b>Storage:</b> 0.01M TBS (pH7.4) with 1% BSA, 0.02% Proclin300 and 50% Glycerol. Shipped at 4°C. Store at -20°C for one year. Avoid repeated freeze/thaw cycles.		
<b>Background:</b> FSD1L is a 530 amino acid protein containing one B30.2/SPRY domain, one COS domain, and a fibronectin type-III domain. Existing as three alternatively spliced isoforms, FSD1L is expressed primarily in brain, with lower levels of expression found in thymus, pituitary and testis. FSD1L may function in microtubule binding during interphase and is encoded by a gene that maps to human chromosome 9q31.2. Chromosome 9 consists of about 145 million bases and comprises approximately 4% of the human genome and encodes nearly 900 genes. Considered to play a role in gender determination, deletion of the distal portion of 9p can lead to development of male to female sex reversal, the phenotype of a female with a male X,Y genotype.		

**— VALIDATION IMAGES —**

Sample: 293T Cell (Human) Lysate at 30 ug  
Primary: Anti- FSD1L (bs-13221R) at 1/300  
dilution Secondary: IRDye800CW Goat Anti-  
Rabbit IgG at 1/20000 dilution Predicted band  
size: 60kD Observed band size: 60kD



Paraformaldehyde-fixed, paraffin embedded  
(Rat kidney); Antigen retrieval by boiling in  
sodium citrate buffer (pH6.0) for 15min; Block  
endogenous peroxidase by 3% hydrogen  
peroxide for 20 minutes; Blocking buffer (normal  
goat serum) at 37°C for 30min; Antibody  
incubation with (FSD1L) Polyclonal Antibody,  
Unconjugated (bs-13221R) at 1:500 overnight at  
4°C, followed by a conjugated secondary  
(sp-0023) for 20 minutes and DAB staining.



Paraformaldehyde-fixed, paraffin embedded  
(Rat brain); Antigen retrieval by boiling in  
sodium citrate buffer (pH6.0) for 15min; Block  
endogenous peroxidase by 3% hydrogen  
peroxide for 20 minutes; Blocking buffer (normal  
goat serum) at 37°C for 30min; Antibody  
incubation with (FSD1L) Polyclonal Antibody,  
Unconjugated (bs-13221R) at 1:500 overnight at  
4°C, followed by a conjugated secondary  
(sp-0023) for 20 minutes and DAB staining.