

bs-13215R

[Primary Antibody]

FRG1 Rabbit pAb

Bioss
ANTIBODIES

www.bioss.com.cn

sales@bioss.com.cn

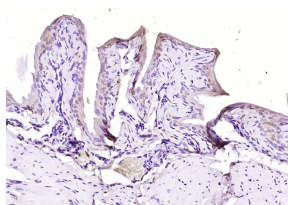
techsupport@bioss.com.cn

400-901-9800

— DATASHEET —

Host: Rabbit	Isotype: IgG	Applications: IHC-P (1:100-500) IHC-F (1:100-500) IF (1:100-500) Reactivity: Human, Mouse (predicted: Rat, Rabbit, Cow, Horse) Predicted MW.: 29 kDa Subcellular Location: Nucleus
Clonality: Polyclonal		
GeneID: 2483	SWISS: Q14331	
Target: FRG1		
Immunogen: KLH conjugated synthetic peptide derived from human FRG1: 181-258/258.		
Purification: affinity purified by Protein A		
Concentration: 1mg/ml		
Storage: 0.01M TBS (pH7.4) with 1% BSA, 0.02% Proclin300 and 50% Glycerol. Shipped at 4°C. Store at -20°C for one year. Avoid repeated freeze/thaw cycles.		
Background: This gene maps to a location 100 kb centromeric of the repeat units on chromosome 4q35 which are deleted in facioscapulohumeral muscular dystrophy (FSHD). It is evolutionarily conserved and has related sequences on multiple human chromosomes but DNA sequence analysis did not reveal any homology to known genes. In vivo studies demonstrate the encoded protein is localized to the nucleolus. [provided by RefSeq, Jul 2008].		

— VALIDATION IMAGES —



Paraformaldehyde-fixed, paraffin embedded (mouse bladder); Antigen retrieval by boiling in sodium citrate buffer (pH6.0) for 15min; Block endogenous peroxidase by 3% hydrogen peroxide for 20 minutes; Blocking buffer (normal goat serum) at 37°C for 30min; Antibody incubation with (FRG1) Polyclonal Antibody, Unconjugated (bs-13215R) at 1:200 overnight at 4°C, followed by operating according to SP Kit(Rabbit) (sp-0023) instructions and DAB staining.