

**bs-13209R****[ Primary Antibody ]****FOXRED1 Rabbit pAb****BioSS**  
**ANTIBODIES**

www.bioss.com.cn

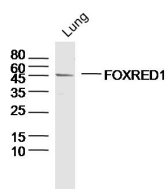
sales@bioss.com.cn

techsupport@bioss.com.cn

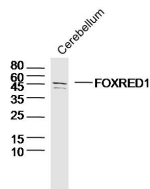
400-901-9800

**— DATASHEET —**

<p><b>Host:</b> Rabbit</p> <p><b>Clonality:</b> Polyclonal</p> <p><b>GeneID:</b> 55572</p> <p><b>Target:</b> FOXRED1</p> <p><b>Immunogen:</b> KLH conjugated synthetic peptide derived from human FOXRED1: 251-350/486.</p> <p><b>Purification:</b> affinity purified by Protein A</p> <p><b>Concentration:</b> 1mg/ml</p> <p><b>Storage:</b> 0.01M TBS (pH7.4) with 1% BSA, 0.02% Proclin300 and 50% Glycerol. Shipped at 4°C. Store at -20°C for one year. Avoid repeated freeze/thaw cycles.</p> <p><b>Background:</b> FOXRED1 is a 486 amino acid single-pass membrane protein. Utilizing FAD as a cofactor, FOXRED1 may act as a chaperone protein essential for the function of mitochondrial complex I. Mutations to FOXRED1 may result in mitochondrial complex I deficiency (MT-C1D), which results in a wide range of clinical maladies from lethal neonatal disease to adult onset neurodegenerative disorders. Common phenotypes of MT-C1D include cardiomyopathy, liver disease, Leigh syndrome, Leber hereditary optic neuropathy, and some forms of Parkinson disease. FOXRED1 exists as three alternatively spliced isoforms and is encoded by a gene mapping to human chromosome 11q24.2. With approximately 135 million base pairs and 1,400 genes, chromosome 11 makes up around 4% of human genomic DNA and is considered a gene and disease association dense chromosome.</p>	<p><b>Isotype:</b> IgG</p> <p><b>SWISS:</b> Q96CU9</p> <p><b>Applications:</b> WB (1:500-2000)</p> <p><b>Reactivity:</b> Mouse (predicted: Human, Rat, Rabbit, Pig, Dog, Horse)</p> <p><b>Predicted MW.:</b> 54 kDa</p> <p><b>Subcellular Location:</b> Cell membrane</p>
--	---

**— VALIDATION IMAGES —**

Sample: Lung (Mouse) Lysate at 40 ug Primary: Anti-FOXRED1 (bs-13209R) at 1/300 dilution  
Secondary: IRDye800CW Goat Anti-Rabbit IgG at 1/20000 dilution Predicted band size: 54 kD  
Observed band size: 50 kD



Sample: Cerebellum (Mouse) Lysate at 40 ug Primary: Anti-FOXRED1 (bs-13209R) at 1/300 dilution  
Secondary: IRDye800CW Goat Anti-Rabbit IgG at 1/20000 dilution Predicted band size: 54 kD  
Observed band size: 54 kD