

bs-8246R**[Primary Antibody]****BioSS**
ANTIBODIES

www.bioss.com.cn

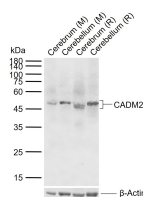
sales@bioss.com.cn

techsupport@bioss.com.cn

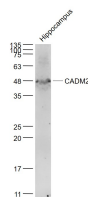
400-901-9800

CADM2 Rabbit pAb**— DATASHEET —**

Host: Rabbit Clonality: Polyclonal GeneID: 253559 Target: CADM2 Immunogen: KLH conjugated synthetic peptide derived from human CADM2: 125-250/435. Purification: affinity purified by Protein A Concentration: 1mg/ml Storage: 0.01M TBS (pH7.4) with 1% BSA, 0.02% Proclin300 and 50% Glycerol. Shipped at 4°C. Store at -20°C for one year. Avoid repeated freeze/thaw cycles. Background: Ig (immunoglobulin) superfamily members exhibit functional characteristics including immune responses, growth factor signaling and cell adhesion. IGSF4D (Ig superfamily member 4D) is also known as CADM2 (cell adhesion molecule 2), Necl-3 (nectin-like protein 3) or synCAM2 and is a 435 amino acid protein that is a member of the nectin family. IGSF4D contains two C2-type domains and one V-type domain, which are characteristic of the nectin family and are thought to function in molecular recognition. IGSF4D is expressed in many tissues, including brain, where it is detected in the nervous system, specifically in myelinated axons and ependymal cells. IGSF4D is localized to the plasma membrane as a single-pass membrane protein and is expressed as three isoforms. IGSF4D functions in the regulation of cell–cell adhesion by homophilic and heterophilic interactions leading to cell aggregation. These interactions are also important for neuron–neuron or neuron–glia associations, which are important for the development and function of the central nervous system. IGSF4D is downregulated in lung cancer, suggesting a possible role in tumor suppression.	Isotype: IgG SWISS: Q8N3J6 Applications: WB (1:500-2000) Reactivity: Mouse, Rat (predicted: Human, Rabbit, Pig, Sheep, Cow, Dog, Horse) Predicted MW.: 45 kDa Subcellular Location: Cell membrane
--	---

— VALIDATION IMAGES —

Sample: Lane 1: Mouse Cerebrum tissue lysates
Lane 2: Mouse Cerebellum tissue lysates Lane 3:
Rat Cerebrum tissue lysates Lane 4: Rat
Cerebellum tissue lysates Primary: Anti- CADM2
(bs-8246R) at 1/1000 dilution Secondary:
IRDye800CW Goat Anti-Rabbit IgG at 1/20000
dilution Predicted band size: 45 kDa Observed
band size: 47 kDa



Sample: Hippocampus (Mouse) Lysate at 40 ug
Primary: Anti- CADM2 (bs-8246R) at 1/1000
dilution Secondary: IRDye800CW Goat Anti-
Rabbit IgG at 1/20000 dilution Predicted band
size: 45 kD Observed band size: 48 kD

— SELECTED CITATIONS —

- **[IF=4.456]** Bohui Xiong. et al. LncRNA8276 primes cell–cell adhesion for regulation of spermatogenesis. ANDROLOGY-US. 2022 Sep;; IF ;Mouse. 36116016

Important Note: This product as supplied is intended for research use only, not for use in human, therapeutic or diagnostic applications.