

bs-8258R**[Primary Antibody]****DGCR2 Rabbit pAb****Bioss**
ANTIBODIES

www.bioss.com.cn

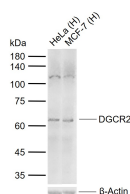
sales@bioss.com.cn

techsupport@bioss.com.cn

400-901-9800

— DATASHEET —

Host: Rabbit	Isotype: IgG	Applications: WB (1:500-2000)
Clonality: Polyclonal		Reactivity: Human (predicted: Mouse, Rat, Rabbit, Cow, Zebrafish, Orangutan)
GeneID: 9993	SWISS: P98153	
Target: DGCR2		Predicted MW.: 59 kDa
Immunogen: KLH conjugated synthetic peptide derived from human DGCR2: 151-250/550. < Extracellular >		Subcellular Location: Cell membrane
Purification: affinity purified by Protein A		
Concentration: 1mg/ml		
Storage: 0.01M TBS (pH7.4) with 1% BSA, 0.02% Proclin300 and 50% Glycerol. Shipped at 4°C. Store at -20°C for one year. Avoid repeated freeze/thaw cycles.		
Background: The DGCR2 gene encodes a novel putative adhesion receptor protein, which may play a role in neural crest cells migration, a process which has been proposed to be altered in DiGeorge syndrome. Deletions of the 22q11.2 have been associated with a wide range of developmental defects (notably DiGeorge syndrome, velocardiofacial syndrome, conotruncal anomaly face syndrome and isolated conotruncal cardiac defects) classified under the acronym CATCH 22.		

— VALIDATION IMAGES —

Sample: Lane 1: Human HeLa cell lysates Lane 2:
Human MCF-7 cell lysates Primary: Anti-DGCR2
(bs-8258R) at 1/1000 dilution Secondary:
IRDye800CW Goat Anti-Rabbit IgG at 1/20000
dilution Predicted band size: 59 kDa Observed
band size: 62 kDa